



SERVICES FOR YOUR HOME

Watershed Management Group offers a range of consulting and workshop implementation services. Staff instructors are certified practitioners in active and passive water-harvesting systems and integrated design. If you are unsure what might work best for you, please ask!

Design Services. Whether you want to create a cohesive plan for your property or need technical advice on specific issues, WMG staff can help you meet your goals.

On-site Consultation. Practical advice, technical know-how, and affordable construction resources provided through this on-site visit.

Conceptual Site Plan. A master plan and written recommendations for your landscape neatly integrating water-harvesting native and edible gardens with other landscape elements.

Design to Build. Complete landscape design services, from design through build, including conceptual design, comprehensive planting design, construction plans, and construction observation.

Workshop Packages. Choose from any of the packages below to green your yard and participate in WMG's community education program. Substantial discounts are offered to Co-op members who earn hours by volunteering at workshops other than their own.

Rain Garden. A contoured garden with a diverse array of Sonoran desert plants irrigated by rain. Ideal for small projects.

Greywater to Landscape. A no hassle, sturdy, and appealing plumbing solution to irrigate fruit trees or a lush native habitat.

Rain Tanks. A customized system to capture and store rainwater for irrigation by hose or drip. Plastic or steel culvert tanks available.

Green Infrastructure. Harvest stormwater to irrigate a lush street-side landscape with shade trees.

Green Living Features. Ask us about ferro-cement tanks, chicken coops, solar hot water outdoor showers, composting toilets, and more.

Integrated Workshop Packages. Plan and integrate green-living systems to optimize your site productivity while saving costs long-term.

Yard Makeover. Get the foundation—a contoured landscape, shade trees, and meandering pathways—plus intimate outdoor spaces, accent plants, water savings, and more.

Urban Orchard. All accessible greywater sources plumbed to irrigate 3–20 trees. Includes distribution from laundry, bathroom sink & shower, kitchen sink, and more!

Sonoran Food Forest. A multi-layer landscape for food production, shade, and habitat-incorporating earthworks, soil building, greywater systems, and rain tanks.

Learn more about our Co-op program at www.watershedmg.org/co-op, or email co-op@watershedmg.org

A holistic approach to assessment and design services. We can advise on where to start, resolve problems like erosion, flooding, high water consumption, unproductive soils, and develop comprehensive water-harvesting plans to maximize your yard's production.

On-site Consultation. Get expert advice and all your questions answered about: water conservation and water harvesting, edible landscapes, landscape restoration, and green infrastructure features. Our staff can meet with you on-site to identify hidden opportunities and propose time and money saving strategies, including available rebates to implement integrated landscape systems.

Deliverable: Summary assessment form with prioritized recommendations and local contractors & materials reference sheet

Cost: \$150 (1/2hr drive time incl.)

Conceptual Site Plan. A master plan and written recommendations for your landscape neatly integrating water-harvesting native and edible gardens with other landscape elements.

Estimated Cost: \$450 (base fee) + \$75/hr for extended scope

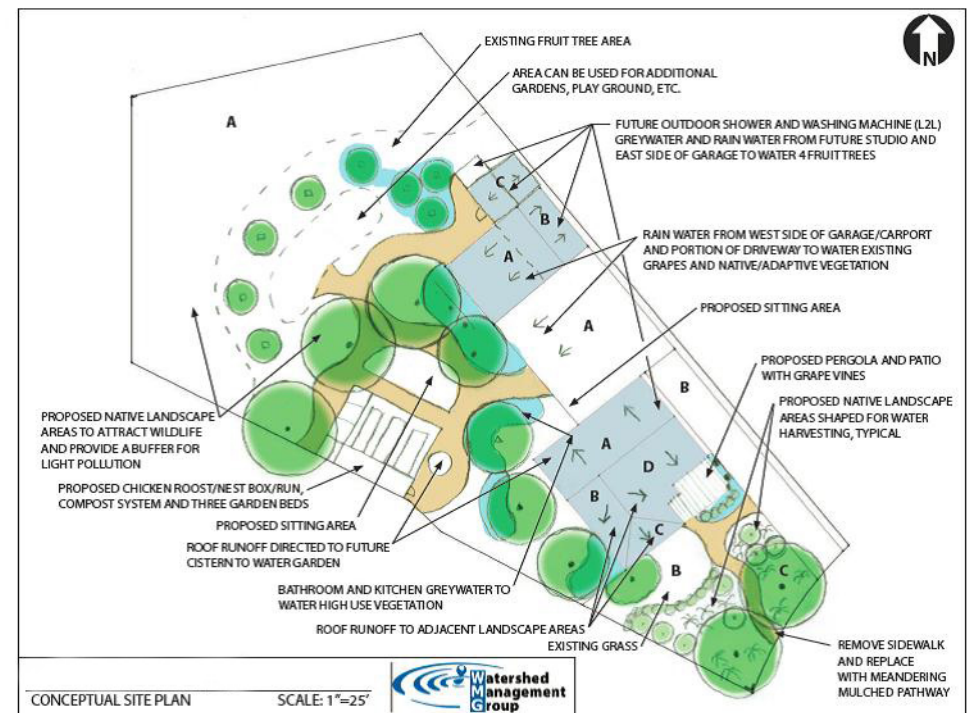
Design to Build. This is WMG's complete design services package, from conceptual design to construction plan to build. We tailor our unique design skill-set with landscape design build services into a package ideal for clients who would like their edible garden, rain garden, or yard built by a licensed contractor.

Deliverable: Construction-ready landscape and planting plan, WMG construction observation, maintenance and materials reference document

Estimated Cost: Begins at \$750, based on project size & scope*

* A design proposal will be submitted to client after completion of the initial consultation, and cost of building will be determined by our recommended contractors after design phase is complete

Conceptual Site Plan Example



Green systems built through educational workshops. Choose from one of the many packages offered below to green your lifestyle and participate in WMG's community education program. Substantial discounts are offered to Co-op members who earn hours volunteering at workshops other than their own. Co-op workshops include organization and leading of community volunteers (6–10 individuals) during a 4–5hr implementation workshop (typical).

Basic Packages



Rain Garden. A simple, no frills rain garden to make better use of the rainwater pouring off your roof or hardscape. Let your neighbor help do your labor and have fun! We can help keep materials costs to a minimum while providing you with a functional and aesthetic rain garden. Ideal for projects <500sf, which can be accomplished in a 4–5hr workshop.

Estimated Project Costs: \$400–\$1000
WMG Project Manager Time: 10+hrs
Contracted: Gutters (optional)
Typical Materials: Mulch = \$0–\$125; Rock = \$0–\$150; Trees = \$8–\$30 ea; Plants = \$3–\$9 ea
** We will help you qualify for Tucson Water's Rainwater Rebate: ½ system costs up to \$2000*



Greywater-to-Landscape. Laundry machines, bathroom sinks, showers, and kitchen sinks (dark greywater) provide great irrigation resources for fruit trees. Our instructors make it a snap to divert greywater at will! We will help coordinate a plumber to stubout the greywater source. Water-harvesting basin (earthworks) plan and excavation may be included in same workshop depending on scope. Our systems are no hassle, low-maintenance, and meet ADEQ's permit requirements.

Estimated Project Costs: \$700–\$1500
WMG Project Manager Time: 14+hrs
Contracted: Plumber @ \$200–\$400 per stubout
Typical Materials: Mulch = \$0–\$125; Rock = \$0–\$150; Fruit Trees = \$30–\$75 ea; Plumbing Materials = \$100–\$200
** Our workshops meet the educational requirement to receive Tucson Water's Greywater rebate: ½ system costs up to \$1000.*

WORKSHOP PACKAGES, CONTINUED



Rain Tanks. Instructors work with you to customize a rain tank system to integrate with your landscape and rainwater supply needs. Rain tanks are ideal for longer-term rain storage needs to irrigate vegetable gardens and fruit trees. Tanks include recommended best practices: all potable-grade materials, leaf diverter, 1st flush pre-filtration, full port valves, overflow directed to infiltration basin with protective cover.

* We will help you qualify for Tucson Water's Rainwater Rebate: ½ system costs up to \$2000

Plastic Tank Workshops

Estimated Project Costs: ~\$900 for simple tank system <1000 gal;
~\$1000–\$4000+ for series of tanks and/or size 1000–5000gal

Project Manager Time: 14+hrs

Contracted: Gutters @ \$10 per linear foot

Typical Materials: Plastic Tank = \$150–\$500; Sand Base = \$65;
Leaf diverter = \$35–\$85 (plastic vs metal); Plumbing = \$250

Additional Costs: Roof areas >1000sf may require 4" tubing
(increased plumbing cost); Extended 1" supply line +\$20–\$40;
Zoning Permit submittal +\$80; Crane to place tank >1500gal +\$240



Steel Culvert Tank Workshops

* Installation requires two 5-hour workshops

Estimated Project Costs: \$1800–\$4000

Project Manager Time: 24+hrs

Contracted: Gutters @ \$10 per linear foot

Typical Materials: Culvert = \$200–\$400+; Concrete Base = \$250–\$350; Leaf diverter = \$35–\$85 (plastic vs metal); Metal Lid = \$240–\$400; Plumbing = \$350

Additional Costs: Roof areas >1000sf may require 4" tubing
(increased plumbing cost); Extended 1" supply line +\$20–\$40; Zoning Permit submittal +\$80; Crane to place culvert if culvert >500lbs +\$240

*Required Co-op hours: 32 hrs

WORKSHOP PACKAGES, CONTINUED



Green Infrastructure. Turn your sun-baked street into a shady, inviting lane. Allow the stormwater flowing by to irrigate shade trees and native pollinator plants. We will help navigate around utilities and permitting to transform that barren hell-strip into a lush native garden.

Estimated Project Costs: \$950–\$1500

WMG Project Manager Time: 14+hrs

Contracted: Concrete Cutting @\$200; Excavator 3–6hrs @\$100/hr
Permit: \$50

Typical Materials: Mulch = \$0–\$125; Rock = \$0–\$150; Native Trees = \$30 ea; Native Accents = \$5–\$9

Green-Living Features. Further develop your site resources by hosting a workshop to install a chicken coop, solar hot water outdoor shower, extreme composting system, or even a ferro-cement rain tank.

Chicken Coops. Customized to your site, durable, with convenient access and predator protection. You and your hens will enjoy the roomy convenience of our coops. *Estimated Project Costs:* \$1000–\$1500+

Outdoor Showers. Greywater inaccessible inside your home? Take your shower outdoors and irrigate a favorite fruit tree. Add on a salvaged water heater tank to solar heat your shower water for near-year round enjoyment. *Estimated Project Costs:* \$1000–\$2000+

Ferro-Cement Rain Tanks. Virtually indestructible and easily made artistic, a ferro-cement tank is labor intensive. Let our Co-op help provide that labor! *Estimated Project Costs:* \$1800–\$2500+



Perks to installing systems through a WMG educational program:

- ◇ Learn first-hand by helping to install systems
- ◇ Benefit community by hosting educational workshop
- ◇ Build community and personal connections

Hourly Rates: \$35 (Co-op)/\$50 (Non-Co-op) + 15% Project Fee; 16 Co-op hours required for Co-op rate unless otherwise noted. Unforeseen difficult digging conditions may limit project scope or increase project costs. Clients provide refreshments and light snacks for volunteers, and assist with pre-soaking area prior to workshop digging.

Integrative Packages

Yard Makeover. Renovating your front or backyard? Our staff can help you create a design and guide you through preparations. We organize and lead enthusiastic volunteers to help implement site-appropriate solutions. WMG can also partner with Primavera Works, a local non-profit workforce development program, to offer preparatory or project completion assistance to reduce cost.

Estimated Project Costs: \$600–\$2500

WMG Project Manager Time: 14+hrs

Contracted: Gutters – optional; Excavator 3–6hrs @ \$100/hr

Typical Materials: Mulch = \$0–\$125; Rock = \$0–\$150; Trees = \$8–\$30 ea; Plants = \$3–\$9 ea

Additional Costs: Rights-of-way work may require permit fee and curb cut/core contractor

Urban Orchard. Be fruit-full and route all accessible greywater sources plumbed to irrigate an urban orchard of 3–20 trees. Includes distribution from laundry, bathroom sink & shower, kitchen sink, and more! *Estimated Project Costs:* \$1000–\$2500

Sonoran Food Forest. A multi-layer landscape for food production, shade, and habitat, incorporating earthworks, soil building, greywater systems, and rain tanks. *Estimated Project Costs:* \$2,000+

