

Welcome to the Water Conservation Series









Free Conservation Workshops

in partnership with Avondale & Buckeye, Goodyear is offering FREE Saturday workshops. Register online.

Avondale	Rainwater Harvesting	Jan 20 - 11:00 am
Avondale	Small Space Gardening	Jan 25 - 6:00 pm
Avondale	Veggie Gardening	Feb 17 - 11:00 am
Avondale	Palindar Gardens	Mar 2 - 11:00 am
Avondale	Selecting Native Plants for Multiple Benefits	Mar 16 - 11:00 am
Buckeye	Pruning Desert Plants & Trees	Apr 27 - 10:30 am
Goodyear	Set Your Watering Schedule & Find Hidden Leaks	May 18 - 10:00 am
Avondale	Native Landscape Care	Jun 15 - 11:00 am
Goodyear	Desert Blooms for All Seasons	Jun 22 - 10:00 am
Buckeye	How to Keep Your Water Bill Under \$100	Jul 20 - 10:30 am
Goodyear	Resilient Landscaping	Aug 17 - 10:00 am
Buckeye	Fruit Trees in the Desert	Sep 7 - 10:30 am
----- No Workshops Scheduled for the Month of October -----		
Goodyear	Converting Lawn to Xeriscape	Nov 9 - 10:00 am
Goodyear	Water in a Desert Winter: Do I Need to?	Dec 7 - 10:00 am

Avondale Resource Center 995 E. Riley Dr.
 Avondale Public Works 910 L. Levern Buckeye Hill
 Buckeye City Hall Library 29608 W. Yuma St. #101
 Goodyear Georgia T. Lord Library 5600 N. Civic Center

All classes are held on Saturdays. Times & locations vary. See schedule. Expected duration per workshop is 1.5 hours.

2024 Schedule

Learn more or register at www.goodyearaz.gov/waterclasses

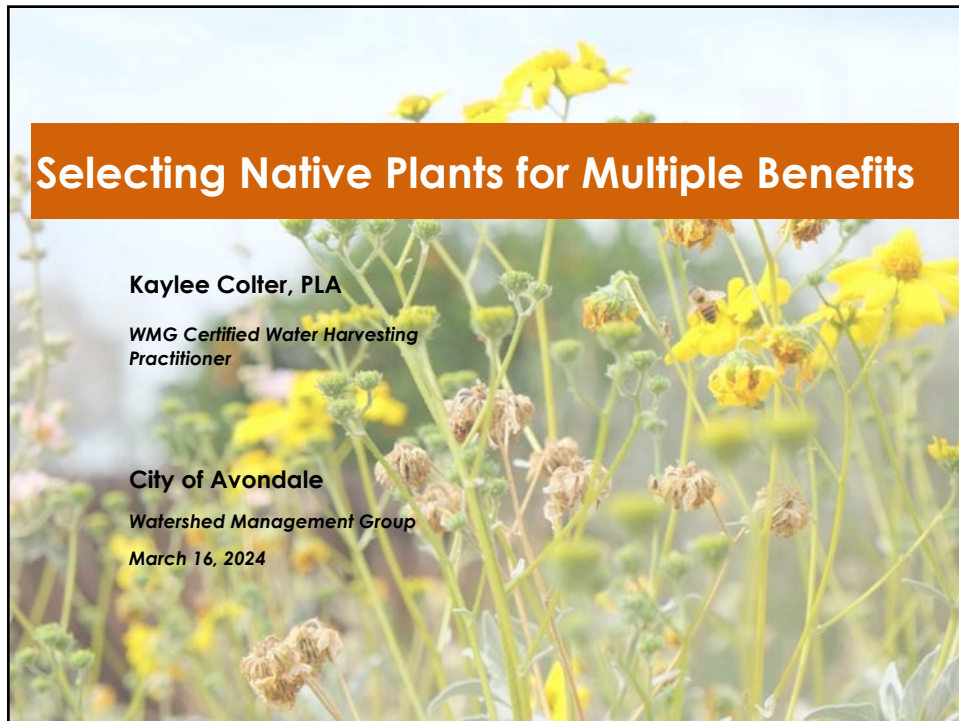
1



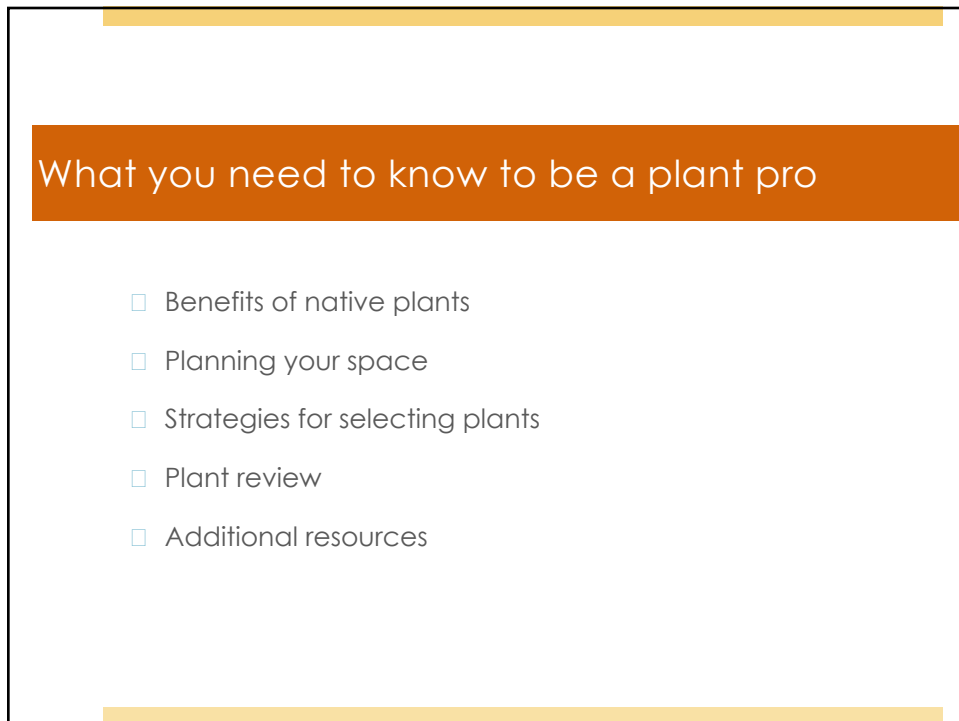
Watershed Management Group develops and implements community-based solutions to ensure the long-term **prosperity of people** and **health of the environment**. We provide people with the knowledge, skills, and resources for sustainable livelihoods.




2



3



4

What is native?



5

Why native plants?

1. Long and thoughtful observation
2. Start at the top of your watershed
3. Always plan an overflow
- 4. Start with small and simple strategies**
5. Spread, slow and sink
6. Maximize living/organic groundcover
7. Stack functions
8. Continually evaluate

6

Less Irrigation

This is your Creosote



This is your Creosote on irrigation



7

Less Maintenance

- Select the right location and your native plants will need little to no maintenance
- Less irrigation also means less maintenance
- Leave debris to become mulch and have even less maintenance!



8

Less Fertilizer

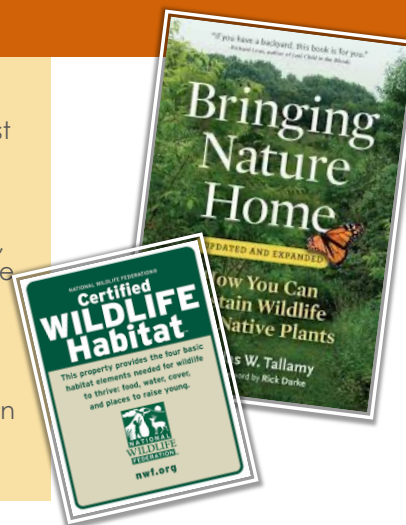
Native plants have evolved in native soil conditions



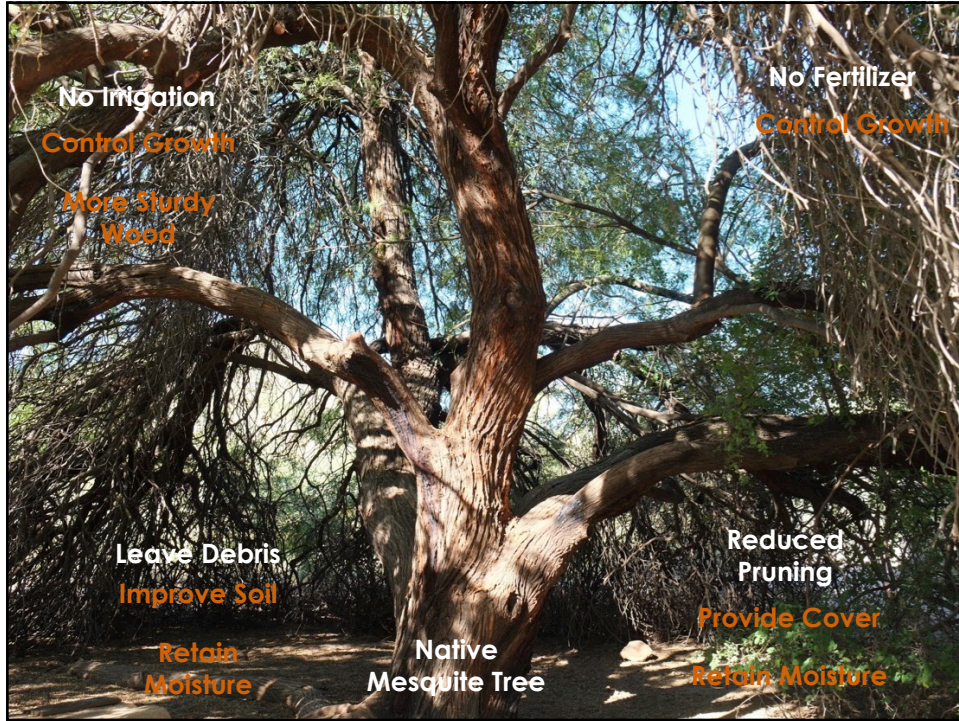
9

More Habitat

- Native plants are essential to preserve biodiversity as specialist species depend on them for survival
- To create habitat provide: food, water, cover, and places to raise young
- National Wildlife Foundation
- City of Glendale, Wildlife Garden Guide



10



11



12

Strategies for Selecting Your Plants

13

Understand your space

- What does the yard look like, including any existing features?
- Are there utilities to avoid? (Bluestake – Arizona 811)
- Are there any grading/drainage concerns?
- Do you have any soil issues, such as caliche?
- Where are shaded areas? Exposed areas? East? West?
- Can you provide irrigation? If so what methods are available?
- Are there any views you want to maintain or screen?
- What positive aspects do you want to maintain?

14

Understand your goals

What do you want your landscape to do for you?

- Shade
- Screening (visual or sound)
- Dining, living, playing, relaxing
- Wildlife habitat
- Support water harvesting features
- Beauty/Aesthetics

15

Make yourself a diagram

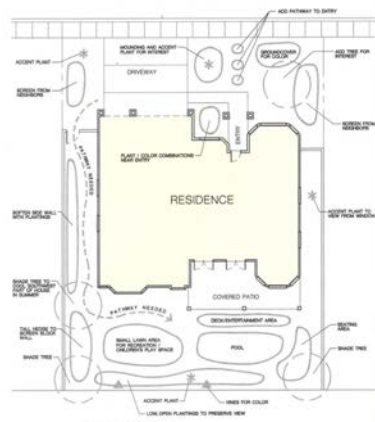


Image from: Xeriscape: Landscaping with Style in the Arizona Desert by AMWUA

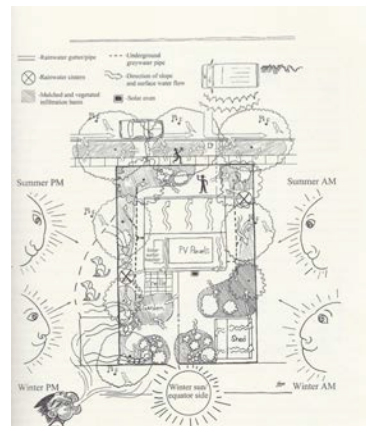
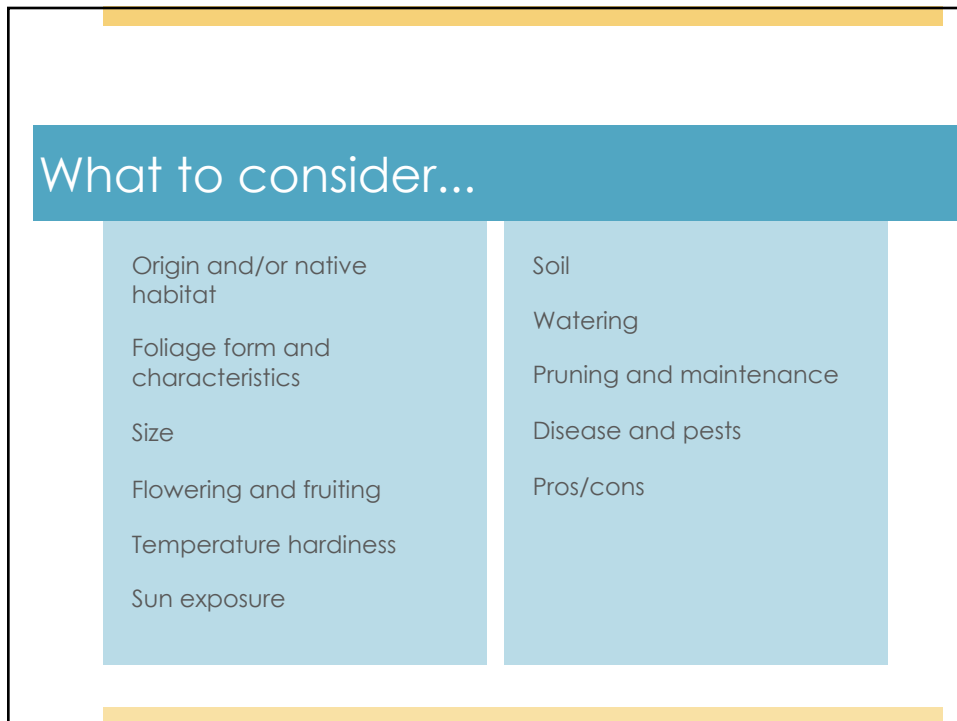


Image from: Rainwater Harvesting for Drylands and Beyond Vol 1 by Brad Lancaster

16



17



18

What to consider...

Origin and/or native habitat	Soil
Foliage form and characteristics	Watering
Size	Pruning and maintenance
Flowering and fruiting	Disease and pests
Temperature hardiness	Pros/cons
Sun exposure	

19

Trees

20

Blue Palo Verde

Parkinsonia florida

Form: Partially deciduous; rounded

Size: 30' H & W

Flowers: Yellow flowers; April

Exposure: Full sun

Distinct trait: Slight blue tint

Pro/con: Fast growing, large canopy, good for habitat



21



Blue Palo Verde (*Parkinsonia florida*)



Desert Museum Hybrid

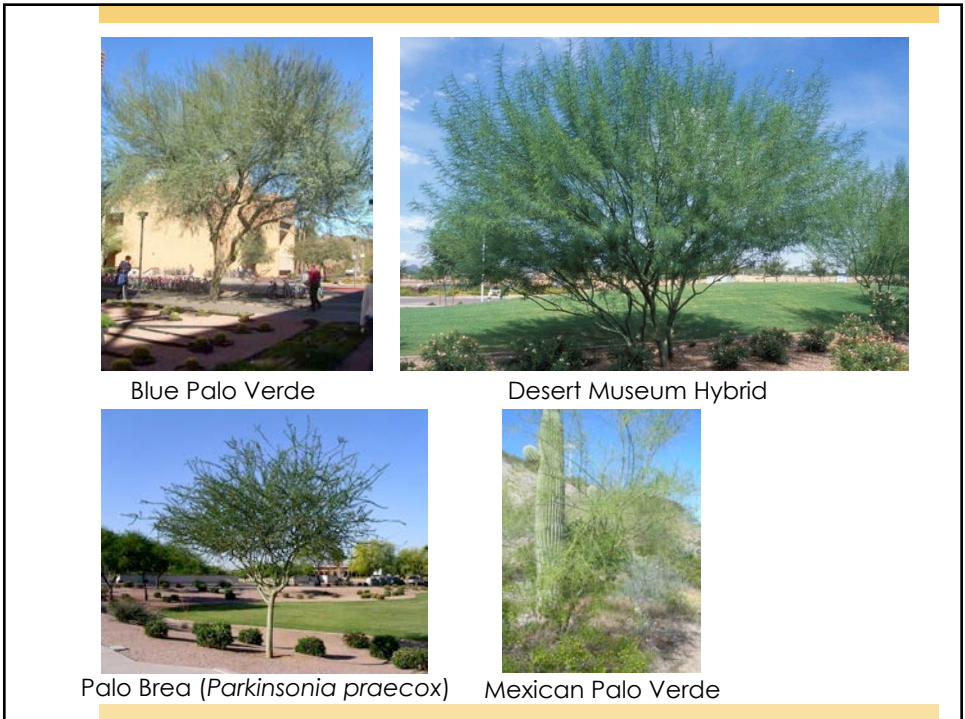


Little Leaf (*Parkinsonia microphylla*)



Mexican Palo (*Parkinsonia aculeata*)

22



23

Arizona/Velvet Mesquite

Prosopis velutina

Form: Partially deciduous; sprawling

Size: 20'-50' H & 15'-25'W

Flowers: Inconspicuous; late May

Exposure: Full sun

Distinct trait: Thorns, rounded leaflets

Pro/con: Fast growing, large canopy, edible pods, good for habitat




Image By: Chris Martin, Virtual Library of Phoenix Landscape Plants

24

Mesquite hybrids



Prosopis x 'Phoenix'
-thornless hybrid
-Mountain States Nursery



Prosopis x 'AZT Seedless'
-seedless hybrid
-Arid Zone Trees Nursery

25

Desert Willow

Chilopsis linearis

Form: Deciduous; upright

Size: 15'-35' H&W

Flowers: White-pink; late spring-fall

Exposure: Full sun

Distinct trait: Long leaves, trumpet flowers

Pro/con: Attracts pollinators, many cultivars, smaller patio tree



Image By: Mountain States Wholesale Nursery

26

Desert Willow

Chilopsis linearis

Form: Deciduous; upright

Size: 15'-35' H&W

Flowers: White-pink; late spring-fall

Exposure: Full sun

Distinct trait: Long leaves, trumpet flowers

Pro/con: Attracts pollinators, many cultivars, smaller patio tree



Image By: Mountain States Wholesale Nursery

27

Trees

Screwbean Mesquite
Prosopis pubescens

Desert Ironwood
Olneya tesota

Little Leaf Palo Verde
Parkinsonia microphylla

Feather Bush Tree
Lysiloma watsonii

28

Shrubs

29

Chuparosa

Justicia californica

Form: Loose, spreading

Size: 2'-6' H & W

Flowers: Salmon; cool season

Exposure: Full sun, partial shade

Distinct trait: Tubular flower, green succulent stems

Pro/con: Attracts hummingbirds, brittle, lush with irrigation



30

Chuparosa

Justicia californica

Form: Loose, spreading

Size: 2'-6' H & W

Flowers: Salmon; cool season

Exposure: Full sun, partial shade

Distinct trait: Tubular flower, green succulent stems

Pro/con: Attracts hummingbirds, brittle, lush with irrigation



31

Brittlebush

Encelia farinosa

Form: Rounded

Size: 3'-5' H & W

Flowers: Yellow; late winter-spring

Exposure: Full sun

Distinct trait: Triangular, silver foliage

Pro/con: Fast growing, easy color



32

Brittlebush

Encelia farinosa

Form: Rounded

Size: 3'-5' H & W

Flowers: Yellow; late winter-spring

Exposure: Full sun

Distinct trait: Triangular, silver foliage

Pro/con: Fast growing, easy color



33

Creosote

Larrea tridentata

Form: Irregular, varying density

Size: 3'-8' H & W

Flowers: Yellow; spring, with rains

Exposure: Full sun

Distinct trait: Smell, fuzzy seed pods

Pro/con: Consistent once established, drought tolerant



Image By: Chris Martin, Virtual Library of Phoenix Landscape Plants

34

Creosote

Larrea tridentata

Form: Irregular, varying density

Size: 3'-8' H & W

Flowers: Yellow; spring, with rains

Exposure: Full sun

Distinct trait: Smell, fuzzy seed pods

Pro/con: Consistent once established, drought tolerant



Image By: UofA Campus Arboretum

35

Shrubs

Triangle-Leaf Bursage
Ambrosia deltoidea

Hop Bush
Dodonea viscosa

Fairy Duster
Calliandra eriophylla

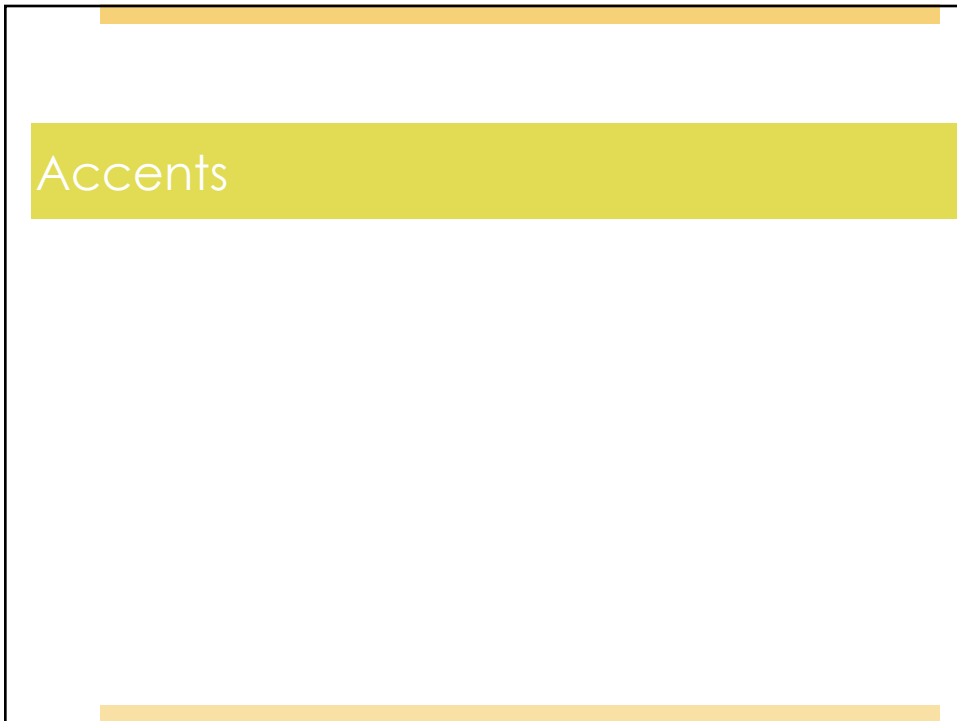
Desert Hackberry
Celtis pallida

Turpentine Bush
Ericameria laricifolia

36



37



38

Desert Milkweed

Asclepias subulata

Form: Upright, rigid green stems

Size: 2'-4'

Flowers: Pale yellow, spring-fall

Exposure: Full sun

Distinct trait: Thin green stems, branching

Pro/con: Monarch host, sparse appearance, no shade



39

Parry's Agave

Agave parryi.

Form: Upright, rigid pineapple leaves

Size: Approx 3' x 3'

Flowers: Large, tall spikes, only flowers once


Exposure: Full sun, will take some shade


Distinct trait: Gray color, thorny margins

Pro/con: Hardy, unique accent




40







Agave attenuata



Queen Victoria Agave



Century Plant



Webber's Agave

41

Engelmann's Prickly Pear

Opuntia engelmannii

Form: Large pads, spreading habit


Size: 6'HT x 15W'

Flowers: Yellow/Orange/Pink

Exposure: Full sun, some shade

Distinct trait: Teardrop pads, glochids & spines

Pro/con: Edible fruit, large & thorny



42

Ocotillo

Fouquieria splendens

Form: Upright, tall, rigid branches

Size: Up to 15'

Flowers: Red flower spikes, Feb-Mar

Exposure: Full sun

Distinct trait: Thorny, upright branches

Pro/con: Unique accent, pollinators



Image By: Chris Martin, Virtual Library of Phoenix Landscape Plants

43

Accents

Saguaro

Carnegiea gigantea

Englemann's Hedgehog Cactus

Echinocereus englemannii

Organ Pipe Cactus

Stenocereus thurberi

Ocotillo

Fouquieria splendens

44

Grasses

45

Deer grass

Muhlenbergia rigens

Form: Large, airy bunch grass

Size: 3'-5'

Flowers: Flower spikes

Exposure: Full sun, some part shade

Distinct trait: Leaves approx. 1/8"

Pro/con: Versatile, large grass



Image By: Chris Martin, Virtual Library of Phoenix Landscape Plants

46



Deer grass

Muhly grass
(*Muhlenbergia capillaris*)

Images By: Chris Martin, Virtual Library of Phoenix Landscape Plants

The image contains two photographs of grasses. The left photograph shows a clump of Deer grass with long, thin, arching blades in a natural, dry landscape. The right photograph shows a clump of Muhly grass with similar blades but with a distinct pinkish-purple hue, planted in a landscaped area with mulch and a building in the background.

47

Blue grama

Bouteloua gracilis

Form: Short bunchgrass

Size: 2'

Flowers: Green-purple; spring-summer

Exposure: Full sun

Distinct trait: Comblike seedheads

Pro/con: Fast grower, small, stabilize slopes



The image features a title bar for 'Blue grama' in white text on a dark brown background. Below the title bar is a list of characteristics for the grass, including its scientific name, form, size, flowering time, exposure, and a distinct trait. To the right of the text is a photograph of a clump of Blue grama grass, showing its characteristic comblike seedheads and upright growth habit in a natural setting.

48

Blue grama

Bouteloua gracilis

Form: Short bunchgrass

Size: 2'

Flowers: Green-purple; spring-summer

Exposure: Full sun

Distinct trait: Comblike seedheads

Pro/con: Fast grower, small, stabilize slopes



49

Annuals/Perennials

50

Parry's Penstemon

Penstemon parryi

Form: Herbaceous rosettes

Size: 3'-4'

Flowers: Large, magenta spikes, Feb-Mar

Exposure: Full sun, part shade

Distinct trait: Tubular flowers

Pro/con: Pollinators, many varieties, reseeds,



51

Parry's Penstemon

Penstemon parryi

Form: Herbaceous rosettes

Size: 3'-4'

Flowers: Large, magenta spikes, Feb-Mar

Exposure: Full sun, part shade

Distinct trait: Tubular flowers

Pro/con: Pollinators, many varieties, reseeds,



52

Globe mallow

Sphaeralcea ambigua

Form: Irregular, bush

Size: 2'-4'

Flowers: Orange/many colors, winter-spring

Exposure: Full sun

Distinct trait: Round, paper-like flowers

Pro/con: Color, pollinators, rangy



53

Globe mallow

Sphaeralcea ambigua

Form: Irregular, bush

Size: 2'-4'

Flowers: Orange/many colors, winter-spring

Exposure: Full sun

Distinct trait: Round, paper-like flowers

Pro/con: Color, pollinators, rangy



Images By: Chris Martin, Virtual Library of Phoenix Landscape Plants

54

Desert Marigold

Baileya multiradiata

Form: Clumping, rosette

Size: Up to 2'

Flowers: Yellow; winter-spring

Exposure: Full sun

Distinct trait: Curly, silver foliage

Pro/con: Hardy, reseeds,



55



56

Annuals/Perennials

Chocolate Flower

Berlandiera lyrata

Paperflower

Psilosrophe cooperi

Firecracker Penstemon

Penstemon eatonii

Mt. Lemon Marigold

Tagetes lemonii

57

Where Can You Learn More?

- Virtual Library of Phoenix Landscape Plants (Dr. Chris Martin, ASU)
- ADWR Low Water Use Plant List
- AMWUA (www.amwua.org/plants)
- Sunset Western Garden Book
- Native Plants for Southwestern Landscapes (Judy Mielke)
- Mountain States Nursery (www.mswn.com)

58

Where Can You Find Native Plants?

- Get the most selection from local nurseries
- Arizona Nursery Association (www.azna.org)
 - Dig It Nursery (Phoenix, AZ)
 - Summer Winds (Phoenix, AZ)
 - Berridge Nursery (Phoenix, AZ)
 - Treeland Nurseries (Mesa, AZ)
- Desert Botanical Garden Plant Sales (Spring/Fall)

59

Questions?

Kaylee Colter | Eighty-Eight Acres
kaylee@eightyeightacres.com
480-525-7880

or

Charlie Alcorn | Watershed Management Group
calcorn@watershedmg.org
Cell: 520.396.3266 x3

60

Thank You!!!

