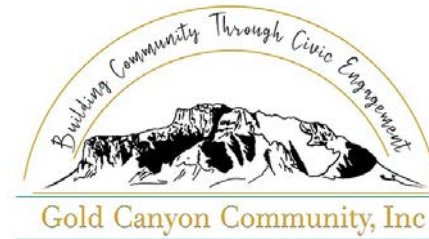


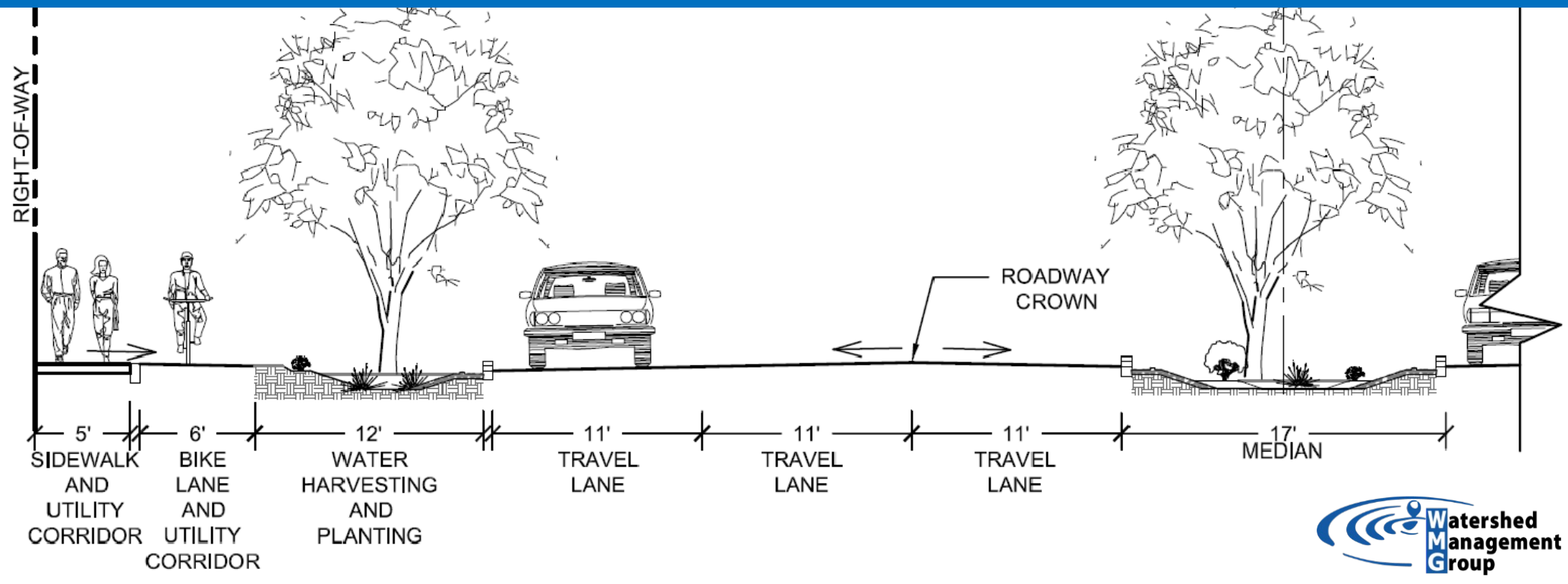
# Welcome to Water: More Precious than Gold Spring Classes



Please fill out the attendance sheet to be emailed additional educational resources



**Watershed Management Group** develops and implements community-based solutions to ensure the long-term **prosperity of people** and **health of the environment**. We provide people with the knowledge, skills, and resources for sustainable livelihoods.



A close-up photograph of a field of yellow wildflowers. The flowers are in various stages of bloom, with some fully open and others as buds. A small bee is visible on one of the flowers. The background is a soft-focus landscape with more flowers and a clear sky.

# Selecting Native Plants for Multiple Benefits

**Kaylee Colter, PLA**

***WMG Certified Water Harvesting  
Practitioner***

**Gold Canyon**

***Watershed Management Group***

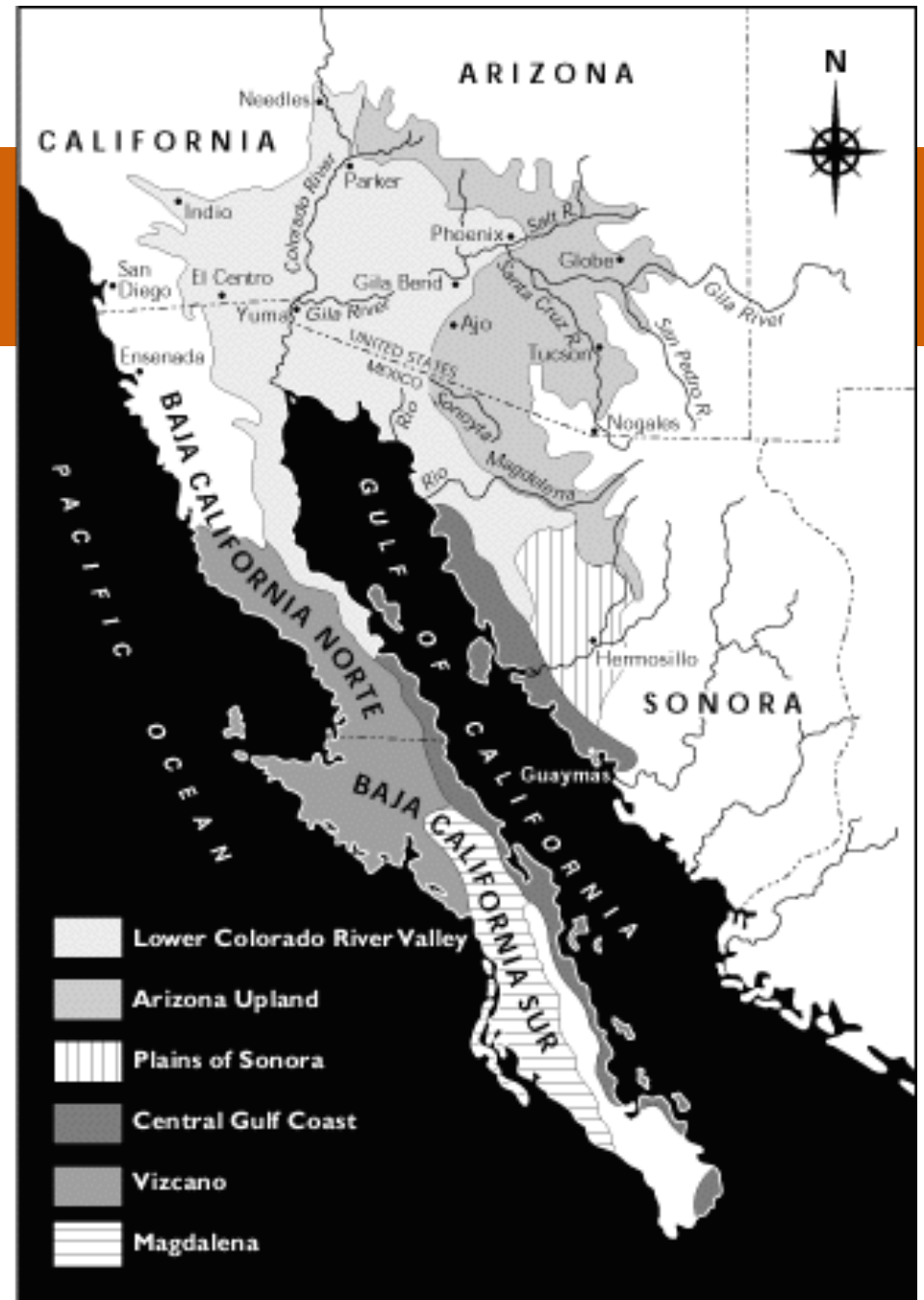
***March 06, 2024***

---

# What you need to know to be a plant pro

- ❑ Benefits of native plants
  - ❑ Planning your space
  - ❑ Strategies for selecting plants
  - ❑ Plant review
  - ❑ Additional resources
-

# What is native?



# Why native plants?

1. Long and thoughtful observation
2. Start at the top of your watershed
3. Always plan an overflow
- 4. Start with small and simple strategies**
5. Spread, slow and sink
6. Maximize living/organic groundcover
7. Stack functions
8. Continually evaluate

# Less Irrigation

This is your Creosote



This is your Creosote on irrigation



# Less Maintenance

- ❑ Select the right location and your native plants will need little to no maintenance
- ❑ Less irrigation also means less maintenance
- ❑ Leave debris to become mulch and have even less maintenance!





# Less Fertilizer

Native plants have evolved in native soil conditions



# More Habitat

- Native plants are essential to preserve biodiversity as specialist species depend on them for survival
- To create habitat provide: food, water, cover, and places to raise young
- National Wildlife Foundation
- City of Glendale, Wildlife Garden Guide





**No Irrigation**  
**Control Growth**

**More Sturdy**  
**Wood**

**No Fertilizer**  
**Control Growth**

**Leave Debris**  
**Improve Soil**

**Retain**  
**Moisture**

**Native**  
**Mesquite Tree**

**Reduced**  
**Pruning**

**Provide Cover**  
**Retain Moisture**

Habitat



---

# Strategies for Selecting Your Plants

---

# Understand your space

- What does the yard look like, including any existing features?
- Are there utilities to avoid? (Bluestake – Arizona 811)
- Are there any grading/drainage concerns?
- Do you have any soil issues, such as caliche?
- Where are shaded areas? Exposed areas? East? West?
- Can you provide irrigation? If so what methods are available?
- Are there any views you want to maintain or screen?
- What positive aspects do you want to maintain?

---

# Understand your goals

What do you want your landscape to do for you?

- Shade
  - Screening (visual or sound)
  - Dining, living, playing, relaxing
  - Wildlife habitat
  - Support water harvesting features
  - Beauty/Aesthetics
-

# Make yourself a diagram

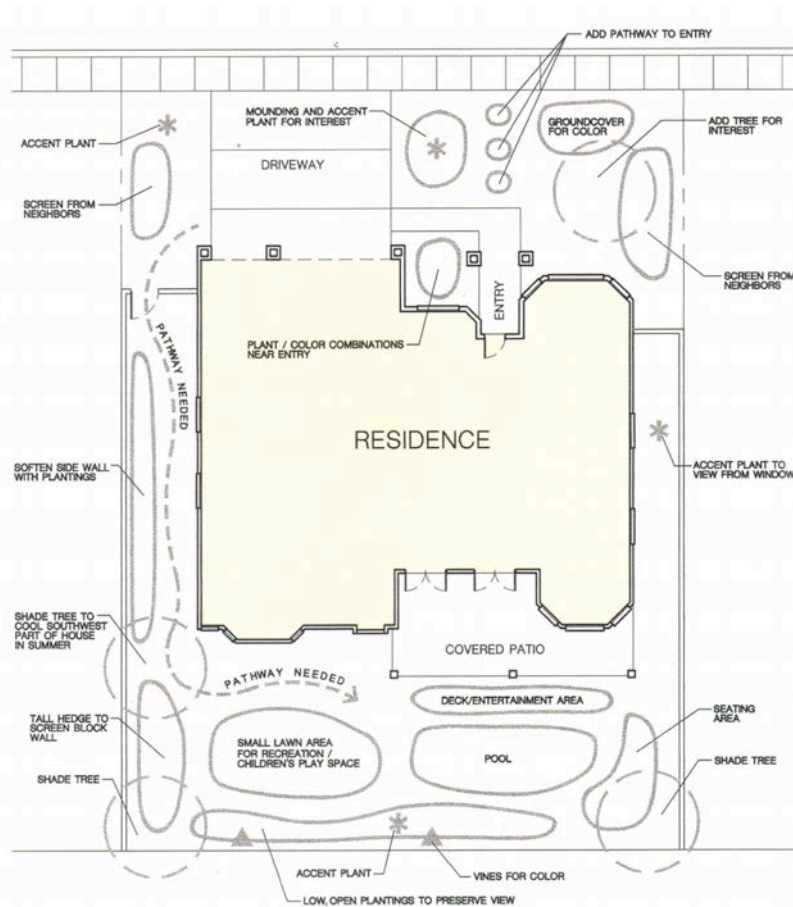


Image from: Xeriscape: Landscaping with Style in the Arizona Desert by AMWUA

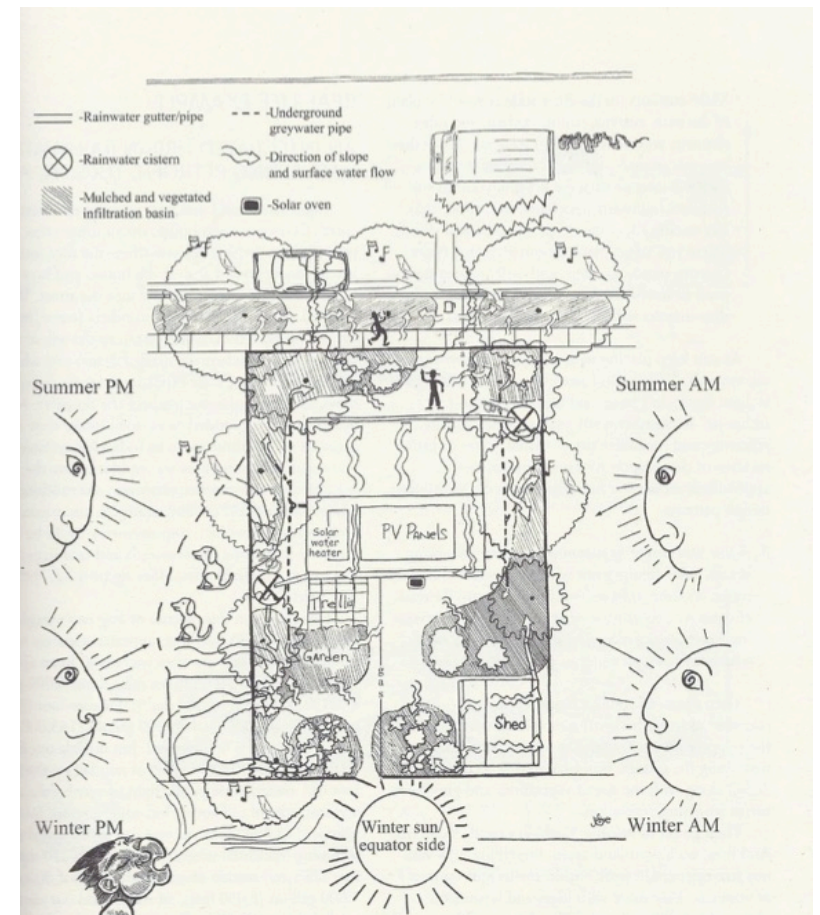


Image from: Rainwater Harvesting for Drylands and Beyond Vol 1 by Brad Lancaster



---

Trees

Shrubs

Accents

Grasses

Annuals/Perennials

---

# What to consider...

Origin and/or native habitat

Foliage form and characteristics

Size

Flowering and fruiting

Temperature hardiness

Sun exposure

Soil

Watering

Pruning and maintenance

Disease and pests

Pros/cons

# What to consider...

Origin and/or native habitat

Foliage form and characteristics

Size

Flowering and fruiting

Temperature hardiness

Sun exposure

Soil

Watering

Pruning and maintenance

Disease and pests

Pros/cons



# Trees



# Blue Palo Verde

*Parkinsonia florida*

Form: Partially deciduous; rounded

Size: 30' H & W

Flowers: Yellow flowers; April

Exposure: Full sun

Distinct trait: Slight blue tint

Pro/con: Fast growing, large canopy, good for habitat





Blue Palo Verde (*Parkinsonia florida*)



Desert Museum Hybrid



Little Leaf (*Parkinsonia microphylla*)



Mexican Palo (*Parkinsonia aculeata*)



Blue Palo Verde



Desert Museum Hybrid



Palo Brea (*Parkinsonia praecox*)



Mexican Palo Verde

# Arizona/Velvet Mesquite

*Prosopis velutina*

Form: Partially deciduous; sprawling

Size: 20'-50' H & 15'-25'W

Flowers: Inconspicuous; late May

Exposure: Full sun

Distinct trait: Thorns, rounded leaflets

Pro/con: Fast growing, large canopy, edible pods, good for habitat

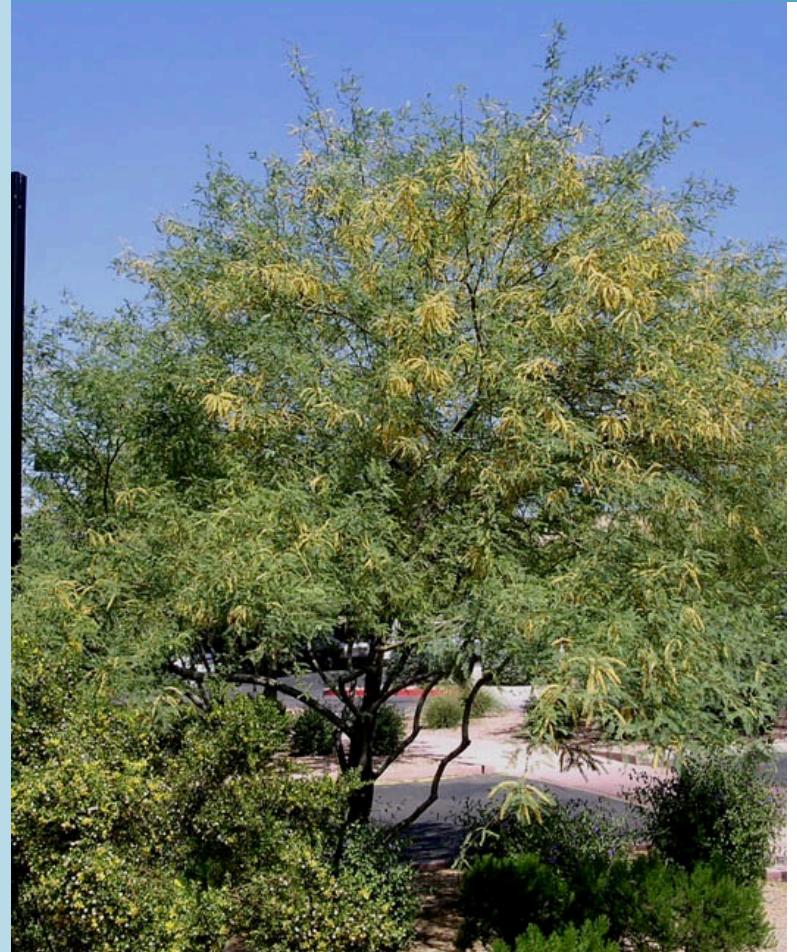


Image By: Chris Martin, Virtual Library of Phoenix Landscape Plants



# Mesquite hybrids



*Prosopis* x 'Phoenix'  
-thornless hybrid  
-Mountain States Nursery



*Prosopis* x 'AZT Seedless'  
-seedless hybrid  
-Arid Zone Trees Nursery

# Desert Willow

*Chilopsis linearis*

Form: Deciduous; upright

Size: 15'-35' H&W

Flowers: White-pink; late spring-fall

Exposure: Full sun

Distinct trait: Long leaves, trumpet flowers

Pro/con: Attracts pollinators, many cultivars, smaller patio tree



Image By: Mountain States Wholesale Nursery

# Desert Willow

*Chilopsis linearis*

Form: Deciduous; upright

Size: 15'-35' H&W

Flowers: White-pink; late spring-fall

Exposure: Full sun

Distinct trait: Long leaves, trumpet flowers

Pro/con: Attracts pollinators, many cultivars, smaller patio tree

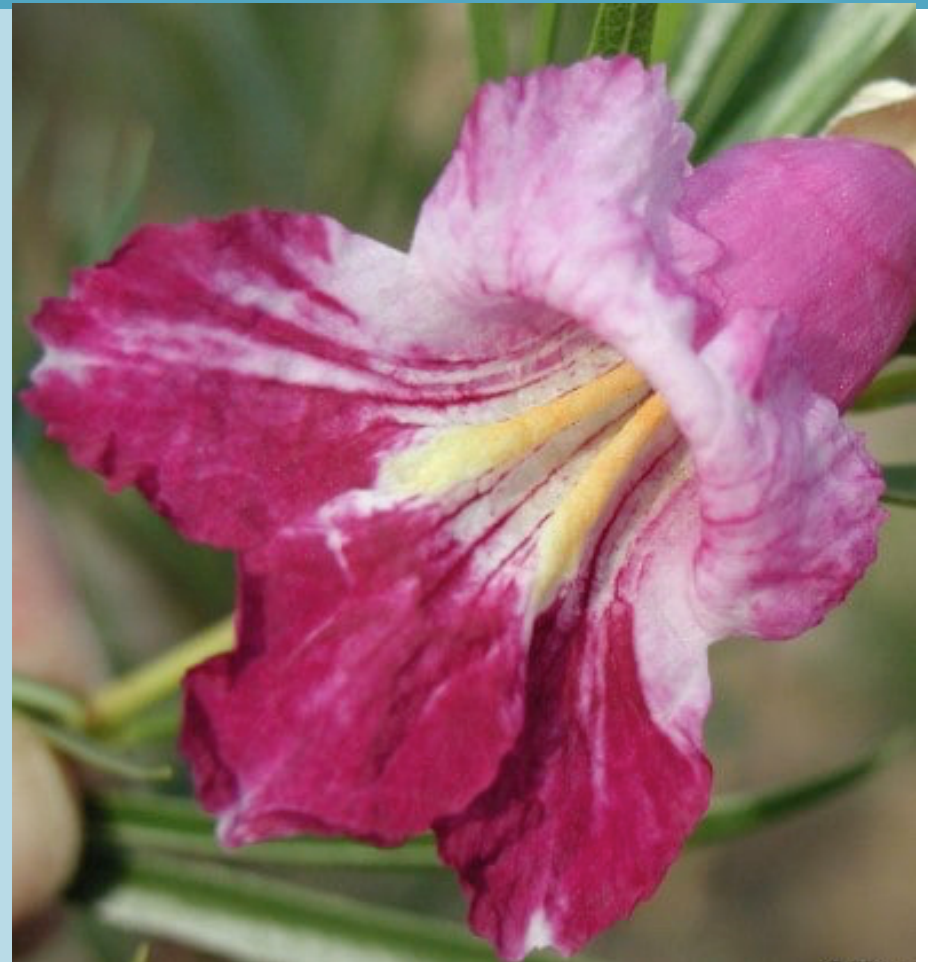


Image By: Mountain States Wholesale Nursery

---

# Trees

## **Screwbean Mesquite**

*Prosopis pubescens*

## **Desert Ironwood**

*Olneya tesota*

## **Little Leaf Palo Verde**

*Parkinsonia microphylla*

## **Feather Bush Tree**

*Lysiloma watsonii*

---



# Shrubs



# Chuparosa

*Justicia californica*

Form: Loose, spreading

Size: 2'-6' H & W

Flowers: Salmon; cool season

Exposure: Full sun, partial shade

Distinct trait: Tubular flower, green succulent stems

Pro/con: Attracts hummingbirds, brittle, lush with irrigation



# Chuparosa

*Justicia californica*

Form: Loose, spreading

Size: 2'-6' H & W

Flowers: Salmon; cool season

Exposure: Full sun, partial shade

Distinct trait: Tubular flower, green succulent stems

Pro/con: Attracts hummingbirds, brittle, lush with irrigation



# Brittlebush

*Encelia farinosa*

Form: Rounded

Size: 3'-5' H & W

Flowers: Yellow; late winter-spring

Exposure: Full sun

Distinct trait: Triangular, silver foliage

Pro/con: Fast growing, easy color





# Brittlebush

*Encelia farinosa*

Form: Rounded

Size: 3'-5' H & W

Flowers: Yellow; late winter-spring

Exposure: Full sun

Distinct trait: Triangular, silver foliage

Pro/con: Fast growing, easy color



# Creosote

*Larrea tridentata*

Form: Irregular, varying density

Size: 3'-8' H & W

Flowers: Yellow; spring, with rains

Exposure: Full sun

Distinct trait: Smell, fuzzy seed pods

Pro/con: Consistent once established, drought tolerant



Image By: Chris Martin, Virtual Library of Phoenix Landscape Plants

# Creosote

*Larrea tridentata*

Form: Irregular, varying density

Size: 3'-8' H & W

Flowers: Yellow; spring, with rains

Exposure: Full sun

Distinct trait: Smell, fuzzy seed pods

Pro/con: Consistent once established, drought tolerant



Image By: UofA Campus Arboretum

---

# Shrubs

## **Triangle-Leaf Bursage**

*Ambrosia deltoidea*

## **Hop Bush**

*Dodonea viscosa*

## **Fairy Duster**

*Calliandra eriophylla*

## **Desert Hackberry**

*Celtis pallida*

## **Turpentine Bush**

*Ericameria laricifolia*

---





# Accents



# Desert Milkweed

*Asclepias subulata*

Form: Upright, rigid green stems

Size: 2'-4'

Flowers: Pale yellow, spring-fall

Exposure: Full sun

Distinct trait: Thin green stems, branching

Pro/con: Monarch host, sparse appearance, no shade



# Parry's Agave

*Agave parryi.*

Form: Upright, rigid pineapple leaves

Size: Approx 3' x 3'

Flowers: Large, tall spikes, only flowers once

Exposure: Full sun, will take some shade

Distinct trait: Gray color, thorny margins

Pro/con: Hardy, unique accent





Oh baby it's hot  
outside...



Why is there cloth on  
some of the plants?

The cloth protects these  
plants from the intense  
summer sun and extreme  
heat. Some of our plants are  
from areas where the amount  
of direct sunlight is limited  
and temperatures are cooler.  
By placing shade cloth on the  
plants, it helps prevent  
sun-stress.

For more information on  
how to protect your plants  
at home, visit our website:  
[www.dbg.org](http://www.dbg.org)

DESERT  
BOTANICAL  
GARDEN



Agave attenuata



Queen Victoria Agave



Century Plant



Webber's Agave

# Engelmann's Prickly Pear

*Opuntia engelmannii*

Form: Large pads, spreading habit

Size: 6'HT x 15W'

Flowers: Yellow/Orange/Pink

Exposure: Full sun, some shade

Distinct trait: Teardrop pads, glochids & spines

Pro/con: Edible fruit, large & thorny



# Ocotillo

*Fouquieria splendens*

Form: Upright, tall, rigid branches

Size: Up to 15'

Flowers: Red flower spikes, Feb-Mar

Exposure: Full sun

Distinct trait: Thorny, upright branches

Pro/con: Unique accent, pollinators



Image By: Chris Martin, Virtual Library of Phoenix Landscape Plants

---

# Accents

## **Saguaro**

*Carnegiea gigantea*

## **Englemann's Hedgehog Cactus**

*Echinocereus englemannii*

## **Organ Pipe Cactus**

*Stenocereus thurberi*

## **Ocotillo**

*Fouquieria splendens*

---

---

# Grasses

---

# Deer grass

*Muhlenbergia rigens*

Form: Large, airy bunch grass

Size: 3'-5'

Flowers: Flower spikes

Exposure: Full sun, some part shade

Distinct trait: Leaves approx. 1/8"

Pro/con: Versatile, large grass



Image By: Chris Martin, Virtual Library of Phoenix Landscape Plants



Deer grass



Muhly grass  
(*Muhlenbergia capillaris*)

# Blue grama

*Bouteloua gracilis*

Form: Short bunchgrass

Size: 2'

Flowers: Green-purple; spring-summer

Exposure: Full sun

Distinct trait: Comblike seedheads

Pro/con: Fast grower, small, stabilize slopes





# Blue grama

*Bouteloua gracilis*

Form: Short bunchgrass

Size: 2'

Flowers: Green-purple; spring-summer

Exposure: Full sun

Distinct trait: Comblike seedheads

Pro/con: Fast grower, small, stabilize slopes





# Annuals/Perennials



# Parry's Penstemon

*Penstemon parryi*

Form: Herbaceous rosettes

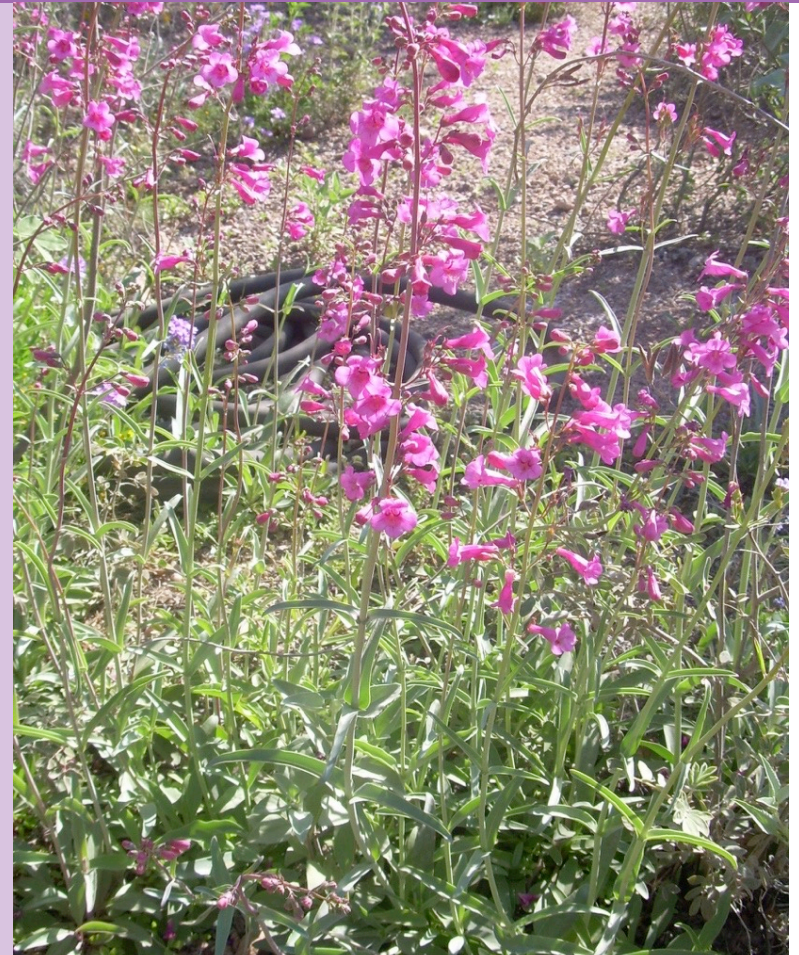
Size: 3'-4'

Flowers: Large, magenta spikes, Feb-Mar

Exposure: Full sun, part shade

Distinct trait: Tubular flowers

Pro/con: Pollinators, many varieties,  
reseeds,



# Parry's Penstemon

*Penstemon parryi*

Form: Herbaceous rosettes

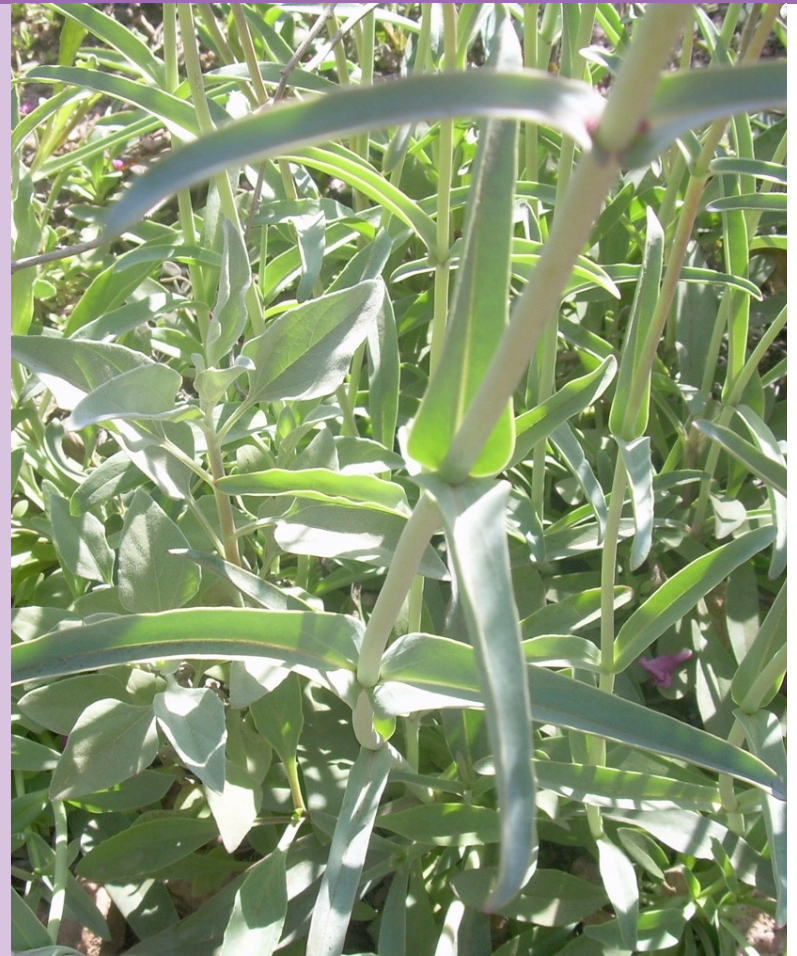
Size: 3'-4'

Flowers: Large, magenta spikes, Feb-Mar

Exposure: Full sun, part shade

Distinct trait: Tubular flowers

Pro/con: Pollinators, many varieties, reseeds,



# Globe mallow

*Sphaeralcea ambigua*

Form: Irregular, bush

Size: 2'-4'

Flowers: Orange/many colors, winter-spring

Exposure: Full sun

Distinct trait: Round, paper-like flowers

Pro/con: Color, pollinators, rangy



# Globe mallow

*Sphaeralcea ambigua*

Form: Irregular, bush

Size: 2'-4'

Flowers: Orange/many colors, winter-spring

Exposure: Full sun

Distinct trait: Round, paper-like flowers

Pro/con: Color, pollinators, rangy



Images By: Chris Martin, Virtual Library of Phoenix Landscape Plants

# Desert Marigold

*Baileya multiradiata*

Form: Clumping, rosette

Size: Up to 2'

Flowers: Yellow; winter-spring

Exposure: Full sun

Distinct trait: Curly, silver foliage

Pro/con: Hardy, reseeds,







---

# Annuals/Perennials

## **Chocolate Flower**

*Berlandiera lyrata*

## **Paperflower**

*Psilosrophe cooperi*

## **Firecracker Penstemon**

*Penstemon eatonii*

## **Mt. Lemon Marigold**

*Tagetes lemonnii*

---

---

# Where Can You Learn More?

- ❑ Virtual Library of Phoenix Landscape Plants (Dr. Chris Martin, ASU)
  - ❑ ADWR Low Water Use Plant List
  - ❑ AMWUA ([www.amwua.org/plants](http://www.amwua.org/plants))
  - ❑ Sunset Western Garden Book
  - ❑ Native Plants for Southwestern Landscapes (Judy Mielke)
  - ❑ Mountain States Nursery ([www.mswn.com](http://www.mswn.com))
-

---

# Where Can You Find Native Plants?

- Get the most selection from local nurseries
- Arizona Nursery Association ([www.azna.org](http://www.azna.org))
  - Dig It Nursery (Phoenix, AZ)
  - Summer Winds (Phoenix, AZ)
  - Berridge Nursery (Phoenix, AZ)
  - Treeland Nurseries (Mesa, AZ)
- Desert Botanical Garden Plant Sales (Spring/Fall)

# Questions?

---

Kaylee Colter | Eighty-Eight Acres  
kaylee@eightyeightacres.com  
480-525-7880

or

Charlie Alcorn | Watershed Management Group  
calcorn@watershedmg.org  
Cell: 520.396.3266 x3

# Thank You!!!

---



Phoenix Green Living Co-op Project 10/12/2013