

SUMMER 2017

A WATERSHED MOMENT

A Newsletter of Watershed Management Group



watershedmg.org
520-396-3266

Tackling Water Equity Together

WMG is proud to both serve and represent our community on watershed issues that are deeply pressing to our community/of upmost concern to our society. Water equity is a critical issue of the 21st century, painfully apparent through current events such as the drinking water crisis in Flint, Michigan, the mega droughts and water shortages in the Colorado River watershed, and Standing Rock's fight against the Dakota Pipeline. In response, we are expanding and adapting our programs to engage our diverse community and make water resource management more equitable for people and the planet. Read on to learn about the many WMG initiatives tackling water equity. We're calling on you to get involved!

What's Inside...

Pg. 3: Living Lab Bilingual Campus

Pg. 4: One Water Policy Priorities

Pg. 6: River Run Network Streamsheds

Pg. 8: Women's Build Series

Pg. 9: Latino Engagement internships

Pg. 10: Low Income Water Harvesting Grant and Loan Program

Hydrate Tempe



WMG's Valley of the Sun team is teaming up with ASU's Global Institute of Sustainability to offer our Hydrate series to Valley residents. Hydrate is a free, five-part educational series where participants learn how to use rainwater and greywater to irrigate shade trees and native and edible gardens. The class is taught by WMG's Ryan Wood and other expert instructors. WMG launched the Hydrate series in 2015 in Phoenix and has since brought the program to Tempe, Mesa, and Glendale with more cities coming in 2018. Learn more and sign up at Watershedmg.org/hydrate.

WMG volunteers plant a rain garden at the Human Services Campus, a downtown Phoenix homeless shelter, in May 2017. Learn how to build your own rain garden at our Hydrate Series.

ASU Julie Ann Wrigley
Global Institute of Sustainability
Arizona State University

Board of Directors

Bill Wilkening, President
Jennifer Mills, Treasurer
Georgia Ehlers, Secretary
Andrea Finger
Mark Fleming
Margot Garcia
Jennifer Psillas
Gordon Yarrington

Staff

Lisa Shipek, Executive Director

Nate Clark, Water Harvesting Crew Member

Rose Clements, Water Harvesting Crew Member

Jen Glass, Communications Associate

Trevor Hare, River Restoration Biologist

Dusty Jacobs, Water Harvesting Crew Member

Sky Jacobs, Administrator & IT Manager

Russell Lowes, Finance Manager

Jamie Manser, Public Relations Manager

Ryan Mores, Community Education Manager

Joaquin Murrieta-Saldivar, Cultural Ecologist

Iylea Olson, Project Manager and Designer

Deborah Oslik, Living Lab Program Coordinator

Lincoln Perino, Water Harvesting Project Manager and Designer

Catlow Shipek, Policy & Technical Director

Kieran Sikdar, Stormwater Director

Emma Stahl-Wert, Sonoran Landscape Specialist

Dan Stormont, Tucson Co-op Manager

Anna Tyler, Water Harvesting Crew Member

Ryan Wood, Program Manager

Newsletter Credits:

Writing & Editing: Lisa Shipek, Jamie Manser, Catlow Shipek, Jen Glass

Spanish Translation: Joaquin Murrieta-Saldivar

Photos: Christian Aguilar-Murrieta, Julius Schlossberg & WMG Staff

Graphic Design: Cero Wood Graphic Design, Inc.



**The New Wave:
One Water**

Fresh oysters, brass bands, and environmental justice came swirling together at a recent conference I attended in New Orleans. I’m abuzz with new energy and optimism from the hundreds of like-minded people who came together around the growing “One Water” movement, ushering in a new era of collaboration and equity around water.

The One Water approach views all water—groundwater, surface water, rainwater, stormwater, wastewater, and reclaimed water—as valuable resources that must be managed holistically and sustainably. This approach is being adopted by cities across the nation and unifying water utilities, local government agencies, and nonprofits in collective action.

Tucson Water’s director, Tim Thomure, organized a special Tucson Delegation to attend the US Water Alliance’s One Water Summit in late June, including representatives from Pima County Flood Control, University of Arizona, Pima Association of Governments, and WMG. I was honored to represent the community interests on this delegation and help chart a new, integrated path for water management in Tucson.

WMG’s role as a community non-profit is to provide leadership and put pressure on our utilities and agencies to work towards holistic watershed management. We view this “pressure” as a collaborative process that includes transparent dialogues, serving on advisory boards, setting a progressive vision, and creating a bridge to the public. In this vein, check out our One Water Policy positions on page 4, priorities that will guide WMG’s senior staff as we provide leadership and work to impact water policy in Tucson and the region.

Sincerely,

Lisa Shipek, Executive Director



**Everyone’s
Welcome at the
Living Lab**

WMG staff and docents welcome visitors with open arms at the new Welcome Center!

When you visit WMG’s Living Lab & Learning Center, we want you to have an enjoyable experience that’s educational, inspiring, and accommodating. So we’re excited for the completion of our Welcome Center, a space where visitors can get the help they’re looking for – from self-guided tours, to checking out our educational kits, to getting questions answered by WMG’s docents.

The Welcome Center was created from a small existing building on our campus, a one-car garage that dates back to the 1940s. Instead of tearing it down, we upgraded it by restoring the concrete floors, installing windows for cross ventilation, and adding on a swanky, one-of-a-kind, handicap-accessible composting toilet.

Our docents are helping staff the Welcome Center by greeting visitors, answering questions, and helping us prepare for outreach events and classes. Docents can give short tours, and soon we’ll have educational signage in both English and Spanish to facilitate self-guided tours. Thanks to federal grant funding from the National Oceanic and Atmospheric Administration (NOAA), we’ll be crafting educational kits that can be checked out by visitors to do hands-on activities related to water harvesting, soil stewardship, and climate adaptation.

The interest in the Living Lab is growing; in 2017 we ramped up from one to two Saturday tours a month, and this fall we’ll start adding tours in Spanish!

WMG’s Living Lab and Learning Center

1137 N Dodge Blvd,
Tucson, AZ 85716
520-396-3266

Visiting Hours
Monday – Friday, 9:30 a.m. – 5 p.m.
Saturday tours available with registration.
Go to Watershedmg.org/event

WMG'S ONE WATER POLICY PRIORITIES

As Tucson moves towards developing a One Water framework, WMG is continuing our local policy work to help shape the process. The One Water approach views all water—groundwater, surface water, rainwater, stormwater, wastewater, and reclaimed water—as valuable resources that must be managed holistically and sustainably.

Here are our top five One Water policy priorities that we are working on through advisory boards, the Community Water Coalition (CWC), and community engagement.

1. **Foster collaborative governance for Santa Cruz River watershed planning and management.**
2. **Create incentives to keep water (effluent) in the Santa Cruz River through watershed planning and a state legislative change for 100% credit for effluent recharged in the river.**
3. **Develop a Green Infrastructure Fund for the City of Tucson to finance and maintain green infrastructure projects throughout the City.**
4. **Extend water harvesting incentives to schools, businesses, and residential well owners.**
5. **Adopt an environmental flows policy to ensure sufficient water is allocated to our streams and rivers to sustain river ecosystems and the benefits they provide to people.**

WMG staff provides leadership and technical expertise on a variety of advisory boards, and watershed research and planning efforts. Lisa and Catlow Shipek are helping spearhead a new Santa Cruz River watershed planning forum through work with the CWC (see page 9). Catlow Shipek provides leadership on the Citizens' Water Advisory Board and Chairs the Conservation subcommittee; Kieran Sikdar chairs the Pima County Flood Control District Advisory Committee; and Lisa Shipek provides leadership on the Community Water Coalition Advisory Board and chairs the Restoration subcommittee.

One crucial way WMG affects policy is through growing public knowledge and support for these policy changes. The River Run Network is one of our core programs to engage people in these issues and work towards our 50 year vision of restoring flow to Tucson's rivers. Want to learn more and help advocate for these One Water policies? Join the River Run Network and help your business, church, school, or favorite non-profit organization join the Community Water Coalition. Together we can unify around change that is good for people and our watershed.

Check out Watershedmg.org/RRN and CommunityWaterCoalition.org for more information and to get involved!

Join the River Run Network!



Enjoying the glorious sunset at our 2nd annual Tanque Verde Flow & Feast event on May 6, 2017.

Do you love flowing creeks and rivers as much as we do? It was only sixty years ago that there were running rivers in Tucson. We can bring them back! It takes hard work and concentrated community effort, but together we can restore the flow. Learn how and join us in collective action by signing up for the River Run Network at Watershedmg.org/RRN. It's easy – add your name and email, and we'll let you know your streamshed, actions you can take at home, and events you can attend with other members. We hope to grow the movement to 500 members this year – and you can make it happen by signing up today!

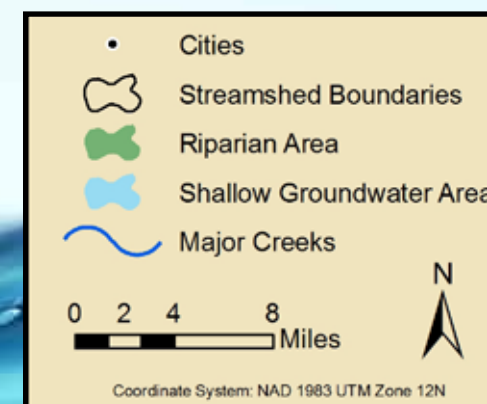
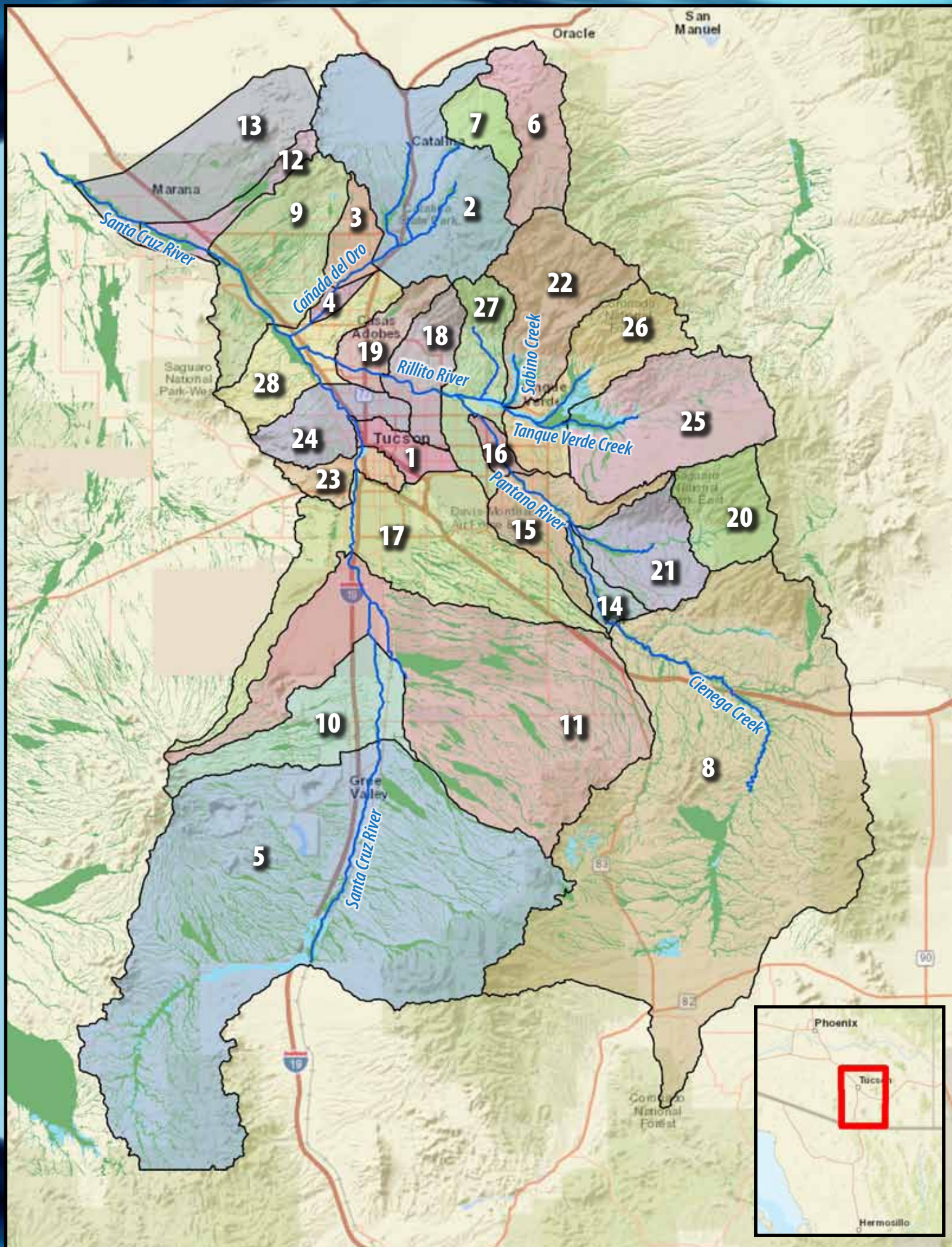
Amy Salvato and David Stevenson enjoy an evening at Isabella Lee Natural Preserve at WMG's 2nd annual Tanque Verde Flow and Feast.

Everyone's in a Streamshed In Tucson's River Run Network

1. Arroyo Chico
2. Upper Cañada del Oro
3. Middle Cañada del Oro
4. Lower Cañada del Oro
5. Canoa
6. Upper Catalina
7. Lower Catalina
8. Cienega Creek
9. Cortaro Narrows
10. Upper Great Mesquite Forest
11. Lower Great Mesquite Forest
12. Upper Marana Flats
13. Lower Marana Flats
14. Upper Pantano
15. Middle Pantano
16. Lower Pantano
17. Paseo de las Iglesias
18. Upper Rillito
19. Lower Rillito
20. Upper Rincon Creek
21. Lower Rincon Creek
22. Sabino Creek
23. Sentinel Peak
24. Sweetwater
25. Upper Tanque Verde
26. Middle Tanque Verde
27. Lower Tanque Verde
28. Tres Rios

WMG has been working hard behind the scenes to expand the River Run Network to include all streams and rivers across the Tucson Basin and their contributing watersheds. While Sabino, Tanque Verde, and Cienega creeks have been our early focus, our ultimate goal is to restore springs, creeks, and rivers across the entire basin. If you live in Tucson, you live in a streamshed that is part of the River Run Network. Go to our interactive map online to find your home, your streamshed, and learn about what you can do to restore groundwater levels and surface flow in your neighborhood.

**Find your home and
explore your streamshed
at Watershedmg.org/RRN**



We Are One Watershed

GET SKILLS AT WOMEN'S BUILD

Resolution #1: We will model strong female roles and fully value women's contributions.

The women who work at Watershed are brilliant, talented, strong and all-around amazing! We are proud of the work they do and how they share these attributes with the community through WMG's leadership, Co-op workshops, design build services, docent development, and classes. WMG embraces female fortitude, and is working to empower women in Tucson. To that end, WMG launched a series of women-only tool trainings and workshops called Women's Build with three trainings this summer and more planned for the year ahead.

The first tool training was taught by WMG's Sonoran Landscape Specialist Emma Stahl-Wert, Water Harvesting Crew Member Anna Tyler, and Living Lab Program Coordinator Deborah Oslik. The class learned how to handle and use a reciprocating saw and a demolition hammer. Emma led the reciprocating saw tutorial, and Anna instructed the attendees on how to handle the demolition hammer.

Other summer Women's Build opportunities included a water harvesting plumbing class and a women-only Co-op workshop. Future classes, events and workshops are being planned, so keep an eye on our website and WMG's Tucson Action Bulletin for upcoming Women's Build announcements!



Emma Stahl-Wert shows Emily Ricketts how to work with a reciprocating saw during the Women's Build Workshop: Tool Training on June 1.

WMG. Las participantes aprendieron como utilizar serruchos eléctricos y martillos demoledores entre otros.

Otras oportunidades durante el verano para Mujeres Construyen incluyen una clase de plomería para cosecha de agua y un taller de la Co-op solo para mujeres. Clases futuras, eventos y talleres están en planeación, este pendiente en nuestra página web y del Boletín de Acción de Tucson del WMG para próximos eventos de ¡Mujeres Construyen!

MUJERES CONSTRUYEN

Resolución #1: Modelaremos roles femeninos fuertes y valoraremos totalmente las contribuciones de las mujeres.

Las mujeres que trabajan en WMG son brillantes, talentosas, fuertes y totalmente ¡asombrosas! Estamos orgullosos del trabajo que realizan y de cómo comparten estos atributos con la comunidad a través del liderazgo de WMG, los talleres de la Co-op, servicios de construcción diseñada, desarrollo de docentes, y clases impartidas. WMG abraza la fortaleza femenina, y está trabajando para empoderar a las mujeres de Tucson. En ese sentido, WMG lanzó una serie de entrenamientos para el uso de herramientas solo para mujeres llamado Mujeres Construyen con tres talleres este verano y otros más en lo que resta del año.

El primer entrenamiento de herramientas lo realizó Emma Stahl-Wert, Especialista de Jardinería del Desierto Sonorense, Anna Tyler del Equipo de Cosecha de Agua y por Deborah Oslik Coordinadora del Laboratorio Viviente, todas de



The Community Food Bank's Garden Leaders receive training, and do work, on low cost tank installations by WMG's Cultural Ecologist Joaquin Murrieta.

As much as WMG values diversity, it is not strongly reflected by our pool of volunteers, donors, and clients. To increase diversity with our program participants, we've created a Latino outreach and engagement internship program in order to connect WMG's work to Tucson's Latino community. Our two interns begin their relationship-building work this fall, and will start by connecting with the community organizations, churches, schools, and neighborhood groups.

FUERZA LATINA Y EDUCACIÓN BILINGÜE

Resolución #2: Adoptaremos la diversidad dentro y fuera de nuestra organización.

Tanto como WMG valora la diversidad, no está fuertemente reflejada con nuestros voluntarios, donantes y clientes. Para aumentar diversidad con los participantes de nuestros programas, hemos creado un programa de pasantías para conectar el trabajo de WMG con la comunidad latina de Tucson. Estos dos pasantes inician sus trabajos de construcción de alianzas en el otoño, reforzando vínculos con las organizaciones comunitarias, iglesias, escuelas y grupos de vecinos.

Estamos aumentando nuestro esfuerzo para llegar a comunidades diversas hombro con hombro con nuestros socios tales como Primavera Foundation, UA's Garden Kitchen, Changemaker High School, Tierra y Libertad, and Community Food Bank.

FUERZA LATINA AND BILINGUAL EDUCATION

Resolution #2: We will embrace diversity within and without our organization.

We are increasing our efforts to reach diverse communities through ongoing partnerships with Primavera Foundation, UA's Garden Kitchen, Changemaker High School, Tierra y Libertad, and Community Food Bank.

WMG has also conducted bilingual trainings in rainwater harvesting systems and are currently collaborating with the City of Tucson, Ward I/ Councilperson Regina Romero's office and the Udall Foundation on the Liberty Bicycle Boulevard project to connect with that area's mostly Latino community to create green infrastructure along this boulevard.

Additional Spanish-speaking community outreach endeavors include offering our Living Lab tours and rebate classes in Español (see pages 14-15), as well as creating bilingual educational materials and interpretive signage at the Living Lab and Learning Center.

WMG ha conducido entrenamientos bilingües en sistemas de cosecha de agua y actualmente estamos colaborando con Ward I de la Ciudad de Tucson/ Councilperson oficina de Regina Romero y la Fundación Udall con el proyecto del Liberty Bicycle Boulevard conectando a la comunidad Latina para crear infraestructura verde a lo largo de este boulevard.

Otros esfuerzos de divulgación con la comunidad de habla hispana incluyen ofrecer nuestros tours y clases de reembolso del Laboratorio Viviente en Español (ver páginas 14-15), así como crear materiales educativos bilingües y letreros interpretativos de nuestro Laboratorio Viviente y Centro de Aprendizaje.

We Are One Watershed

CO-OP SERVES LOW INCOME FAMILIES

Resolution #3: We will redouble our efforts to serve low income communities

One of the goals of WMG's Tucson Green Living Co-op is to serve people of all socioeconomic backgrounds – by offering free training through hands-on workshops – and having a sliding scale on the cost of our services. When Co-op members volunteer 16 hours, they get a 30% discount on our hourly rate. We make our services even more affordable, by offering low-income families a 50% discount on our hourly rate. Our new Design Build program serves clients who can pay the full cost of our services, and the profit offsets the cost of our free, educational programs.

WMG's Tucson Green Living Co-op has been able to offer

subsidies and grants to low-income families in the past thanks to foundation funding. We are currently developing a partnership with Tucson Water to offer grants of \$400 and loans up to \$2,000 to low-income families as a fiscal resource in addition to the city's water harvesting rebate. In addition, we'll be offering free home consultations to anyone who receives a grant or loan.

WMG wants to work with people of all income levels, because we're all part of one watershed and can each do our part to conserve water, green our neighborhoods, and restore our rivers!

LA CO-OP TRABAJA CON FAMILIAS DE BAJOS INGRESOS

Resolución #3: Reforzaremos nuestros esfuerzos para trabajar con comunidades de bajos ingresos.

Una de las metas de la Cooperativa (Co-op) para un Tucson Verde de WMG es de trabajar con gente de todos los niveles socioeconómicos – ofreciendo capacitación gratis a través de talleres interactivos – y teniendo una escala móvil en el costo de nuestros servicios. Cuando los miembros de la Co-op completan 16 horas de trabajo voluntario, obtienen 30% de descuento en nuestra tarifa/hora. Damos nuestros servicios aún más accesibles, ofreciendo a familias de bajos ingresos un descuento del 50% de nuestra tarifa por hora. Nuestro nuevo programa de Construcción Diseñada – Design Build sirve a clientes que pueden pagar el costo total de nuestros servicios, y las ganancias absorben el costo de nuestros programas educativos totalmente gratis.

La Co-op para un Tucson Verde de WMG ha sido capaz de ofrecer subsidios y becas a familias de bajos ingresos en el pasado gracias al financiamiento con fundaciones. Actualmente estamos desarrollando una colaboración con Tucson Water para ofrecer becas de \$400 y préstamos de hasta \$2,000 a familias de bajos ingresos como un recurso fiscal además del programa de reembolso de cosecha de agua de lluvia del agua de la ciudad. Además, estaremos ofreciendo consultas a hogares gratis a quien sea que reciba un préstamo o una beca.

¡El WMG trabaja con gente de todos los niveles de ingreso, porque somos una sola cuenca y cada quien puede hacer algo para conservar agua, enverdecer nuestros vecindarios, y restaurar nuestros ríos!



WMG's "barn-raising" co-op workshops reduce the cost of WMG's services, provide valuable skills, and build community.

LAYING THE GROUNDWORK FOR COLLABORATIVE WATERSHED GOVERNANCE

Resolution #4: We will build political bridges and cross party lines to restore our rivers.



This riparian forest along the Tanque Verde Creek is a priority restoration area.

Watersheds cross political divides and provide a natural framework for collaboration. In that vein, WMG staff is helping spearhead a Santa Cruz River Watershed Planning Forum through its work with the Community Water Coalition (CWC).

There are many different agencies working on aspects of watershed management in the Tucson basin – including Tucson Water, Pima County Flood Control, Bureau of Reclamation, and Pima Association of Governments. However, these agencies don't have a watershed plan that ensures we're all working towards the same management goals. These agencies along with CWC are the core conveners for a watershed forum that will bring together many key stakeholders this fall to create a common vision and goals for our watershed.

CWC has brought in Southwest Decision Resources as facilitators for this process, and Lisa and Catlow Shipek are providing time and leadership to bring together the right players, plan the process, and work closely with other key players from CWC's membership including the Sonoran Institute, Sky Island Alliance, and Tucson Audubon.

WMG hopes the forum will lead to a more robust collaborative governance model to ensure government agencies, elected officials, and community groups are working together towards a healthy watershed and flowing rivers.

ESTABLECIENDO BASES PARA UNA GOBERNANZA COLABORATIVA DE CUENCAS HIDROGRÁFICAS

Resolución #4: Construiremos puentes políticos y cruzaremos las líneas partidistas para restaurar nuestros ríos.

Las cuencas cruzan las divisiones políticas y proveen un marco natural para la colaboración. En este sentido, empleados de WMG colaboran para liderar el Foro de Planeación de la Cuenca del Río Santa Cruz a través de su trabajo con la Coalición Comunitaria del Agua (CWC por sus siglas en Inglés).

Existen muchas agencias trabajando en aspectos de manejo de cuencas en el valle de Tucson – incluyendo Tucson Water, Pima County Flood Control, Bureau of Reclamation, y Pima Association of Governments. Sin embargo estas agencias no cuentan con un plan de cuenca que asegure que todos estamos trabajando para una meta de manejo en común. Estas agencias junto con CWC son los principales organizadores para un foro de cuenca en otoño que reunirá a muchas partes interesadas clave para crear una visión y objetivos comunes para nuestra cuenca

La CWC ha traído al Southwest Decision Resources como facilitadores para este proceso, y Lisa y Catlow Shipek le han dedicado tiempo y liderazgo para reunir a los actores adecuados, planear el proceso y trabajar estrechamente con otros actores clave como los miembros de CWC, incluyendo al Sonoran Institute, a Sky Island Alliance y Tucson Audubon.

WMG espera que el foro nos lleve a un modelo de gobernanza robusta y colaborativa para asegurar que las agencias gubernamentales, los oficiales electos, y grupos comunitarios estemos trabajando juntos para obtener una cuenca saludable y ríos fluyendo.

Youth Link Rain Gardens to River Restoration through Schoolyard Program



On the left, Cienega High School's Green Team works on placing rocks to shore up the berms and basins. On the right, the grounds are ready to soak up rain water!

From observing the snow-capped Santa Catalinas to watching water flowing in Sabino Creek, local youth become passionate about watersheds through WMG's boots-on-the-ground Schoolyard Water Conservation Education Program – a program that connects students to the importance of preserving watersheds through experiential learning.

For the last eight years, WMG has proudly worked with over 30 Tucson schools, educating countless students on the water cycle and desert ecology through hands-on activities, field trips, and classroom sessions. Through this program, students and teachers create rain gardens and urban wildlife habitats – transforming their campuses from land that floods and/or sheds water into rainwater harvesting meccas.

Each year – through a grant from the U.S. Fish and Wildlife Service – we award a \$4,000 matching grant to four or five schools that submit proposals demonstrating their interest, capacity and willingness to work, along with their ability to create a team that will construct their school's rain gardens.

During the 2016-2017 school year, WMG worked with: BASIS Tucson North, Cienega High School, Hermosa Montessori School, Sabino High School, and Valencia Middle School. Students not only learned about the basics of water harvesting and urban wildlife habitat, but also delved into the natural history of our local watersheds along with learning the concrete steps they can take to reduce shallow groundwater pumping and recharge our aquifers.

150 BASIS North elementary students had the unique experience of exploring Lower Sabino Creek, which is privately owned, through a field trip led by WMG's Joaquin Murrieta and Trevor Hare. The children were able to walk through the riparian forest and experience the only creek section in Tucson with year-round flow while learning more about the wildlife and plants dependent on these areas.

Through these efforts, the educators and students are empowered to create and maintain their rain gardens and reap the benefits of creating sustainable habitat for native plants and animals. Like many of you, they have become an integral part of our River Run Network and are actively helping to restore the flow.

If you are an educator interested in bringing WMG to your school, contact Joaquin Murrieta-Saldivar at (520) 396-3266 x13 or jmurrieta@watershed.org.

Cienega High School's Green Team works on placing rocks to shore up the berms and basins of the passive water harvesting system.



From Your Backyard to Our Rivers and Oceans, We Are One Watershed



Help us Restore the Flow, Donate Today!

Watershedmg.org/contribute



LIVING LAB & LEARNING CENTER: *Event Calendar*

SEPTEMBER

Rainwater Harvesting Class (Tucson Water Rebate) Sept. 2, 9 a.m.-noon
 Rainwater Harvesting Class (Tucson Water Rebate) Sept. 5, 4 p.m.-7 p.m.
 Living Lab and Learning Center Free Tour Sept. 9, 8 a.m.-9:30 a.m.
 Greywater Rebate Class (Tucson Water Rebate) Sept. 14, 5 p.m.-7 p.m.
Field Studies Class:
Composting Toilets and Humanure **Sept. 19, 5:30 p.m.-7:30 p.m.**
 Rainwater Harvesting Class (Tucson Water Rebate) Sept. 21, 4 p.m.-7 p.m.
 Tour gratis del Centro de Aprendizaje y Laboratorio Viviente Sept. 23, 8 a.m.-9:30 a.m.
 YogaFlow Tuesdays, 5:30 p.m.-6:30 p.m.
 Community Supported Agriculture – Veggie Pick Up Wednesdays, 4 p.m.-6 p.m.



Field Studies: Composting Toilets and Humanure – Learn how to build and care for your own flush-free composting toilet! Save water, and learn how to safely use the humanure in your own yard.

Homescape Harvest Tour – Families enjoy the variety of yards and homes showcased during the Homescape Harvest tour, taking place this fall on Oct. 28.



OCTOBER

Rainwater Harvesting Class (Tucson Water Rebate) Oct. 7, 9 a.m.-noon
 Rainwater Harvesting Class (Tucson Water Rebate) Oct. 10, 3 p.m.-6 p.m.
Field Studies: Sonoran Food Forests **Oct. 12, 5 p.m.-7 p.m.**
 Living Lab and Learning Center Free Tour Oct. 14, 8 a.m.-9:30 a.m.
 Rainwater Harvesting Class (Tucson Water Rebate) Oct. 19, 3 p.m.-6 p.m.
 Rainwater Harvesting Class (Tucson Water Rebate) Oct. 21, 9 a.m.-noon
 Greywater Rebate Class (Tucson Water Rebate) Oct. 26, 4 p.m.-6 p.m.
Homescape Harvest Tour **Oct. 28, 10 a.m.-2 p.m.**
 YogaFlow Tuesdays, 5:30 p.m.-6:30 p.m.
 Community Supported Agriculture – Veggie Pick Up Wednesdays, 4 p.m.-6 p.m.



River Run Network Lunch and Learn – Dive deep into WMG's River Run Network program and learn about the heritage of Tucson's creeks and rivers and how you can help restore our heritage of flowing rivers. Enjoy a local-foods lunch with WMG founders Lisa and Catlow Shipek on Dec. 9.

NOVEMBER

Tour gratis del Centro de Aprendizaje y Laboratorio Viviente 9 a.m.-10:30 a.m.
 Rainwater Harvesting Class (Tucson Water Rebate) Nov. 16, 3 p.m.-6 p.m.
Field Studies Class: Pruning Native Shade Trees **Nov. 18, 8 a.m.-11 a.m.**
 Clase de Cosecha de Agua de Lluvia (Reembolso de Tucson Water) Nov. 18, 9 a.m.-noon
Rainwater on Tap **Nov. 28**
 YogaFlow Tuesdays, noon-1 p.m.
 Community Supported Agriculture – Veggie Pick Up Wednesdays, 4 p.m.-6 p.m.



Rainwater on Tap – WGM's 3rd Annual Rainwater on Tap features rainwater cocktails and other rain to table fare! This Giving Tuesday event launches our year-end fundraising campaign.



WMG offers Yoga Flow classes on the plaza for \$7 on Tuesdays.

DECEMBER

Rainwater Harvesting Class (Tucson Water Rebate) Dec. 2, 9 a.m.-noon
 Tour gratis del Centro de Aprendizaje y Laboratorio Viviente noon-1:30 p.m.
 Rainwater Harvesting Class (Tucson Water Rebate) Dec. 5, 3 p.m.-6 p.m.
 Clase de Cosecha de Agua de Lluvia (Reembolso de Tucson Water) Dec. 7, 5 p.m.-8 p.m.
 Living Lab and Learning Center Free Tour Dec. 9, 10 a.m.-11:30 a.m.
River Run Network Lunch and Learn **Dec. 9, noon-2 p.m.**
Field Studies Class: Building Healthy Desert Soils **Dec. 14, 4 p.m.-7 p.m.**
 Rainwater Harvesting Class (Tucson Water Rebate) Dec. 21, 3 p.m.-6 p.m.
 YogaFlow Tuesdays, noon-1 p.m. (No Class Dec. 26)
 Community Supported Agriculture – Veggie Pick Up Wednesdays, 4 p.m.-6 p.m.

Field Studies: Desert Soils – Learn how to effectively build soil health and promote a productive urban landscape in your own yard by turning waste into resources.



Register for these events at watershedmg.org/event/tucson or call us at 520-396-3266 x 22



1137 N Dodge Blvd
Tucson, AZ 85716

MISSION:

Watershed Management Group develops and implements community-based solutions to ensure the long-term prosperity of people and health of the environment. We provide people with the knowledge, skills, and resources for sustainable livelihoods.

