

Historic Flow Status - late 1800s to 1910s

WMG defined historic flow status based on historic accounts from photos, researched publications, groundwater depth trends, and current status. Perennial is defined as flows continuously most years. Intermittent is defined as flowing only at certain times of the year.

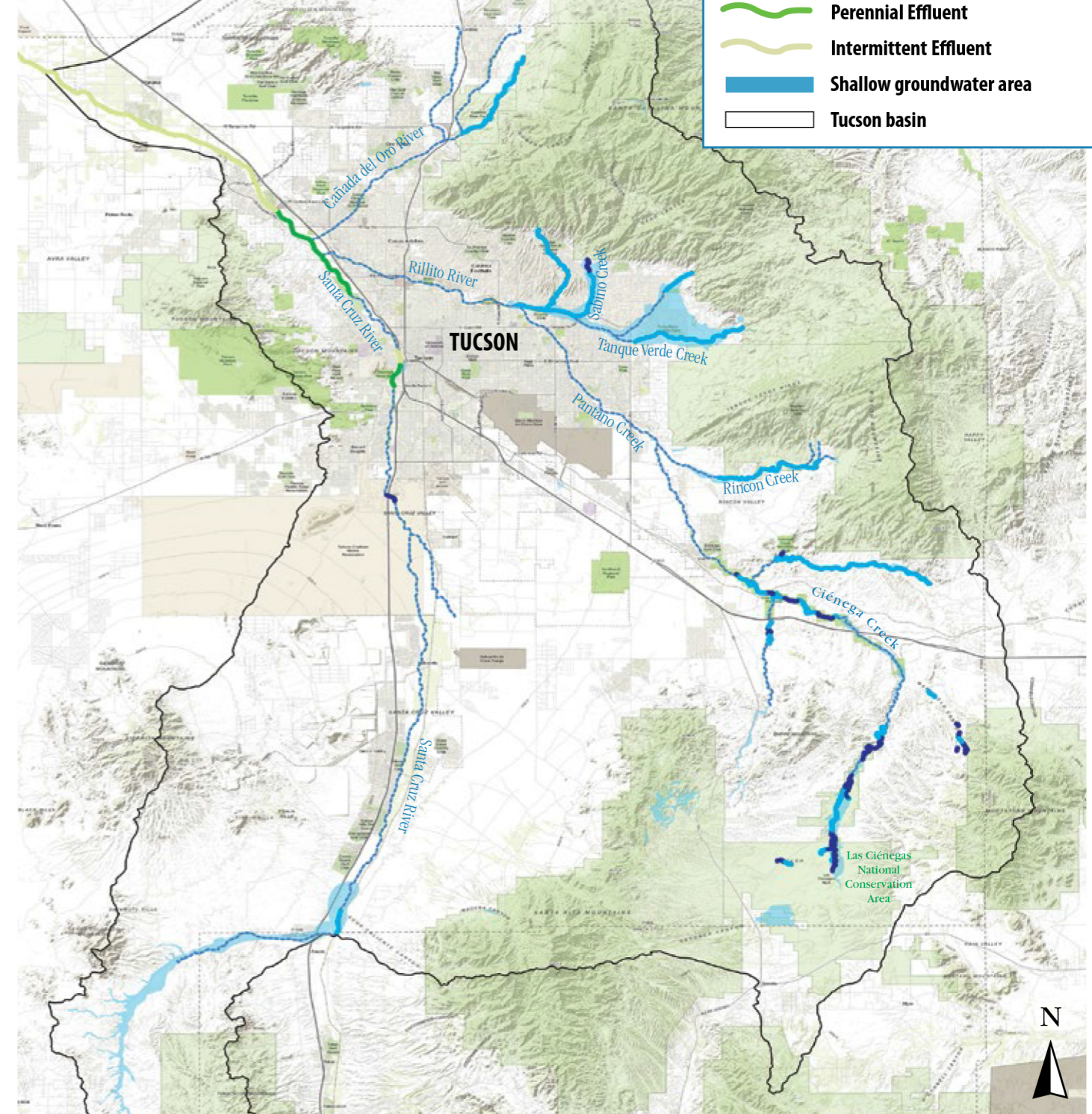
TUCSON'S HERITAGE OF FLOWING

Tucson's rivers have changed dramatically in the last 100 years. These maps show where rivers are flowing year-round, seasonally, and only after rainstorms. Comparing the two maps, it is evident we have lost many of our year-round and seasonal flow reaches. As part of our watershed planning and river restoration



CREEKS AND RIVERS

work, it is critical for us to understand historic conditions as we make decisions about where we want to focus our efforts and what we are ultimately trying to restore. While we will never recreate historic conditions, we can define a new future where flowing rivers are an essential part of our desert cities.



Present Day Flow Status - 2019

The map is based on perennial and intermittent streams defined by Pima County. WMG updated the map based on our Flow365 community science observations of flow states from the last two years.

- Perennial (flows continuously most years)
- Intermittent (seasonal flow)
- Ephemeral (flow after rain events)
- Perennial Effluent
- Intermittent Effluent
- Shallow groundwater area
- Tucson basin